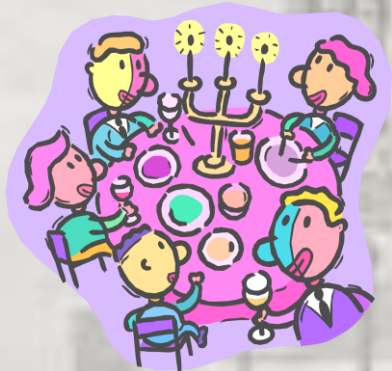




A Murder Mystery Evening

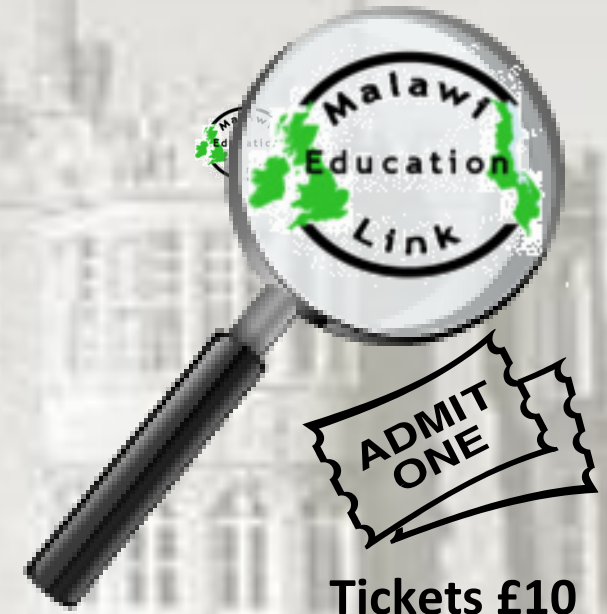


Arrive 7pm for a
prompt start at
7:30pm



Tables of 10

in the Library at Hinchingbrooke House in aid of **MEL**



Tickets £10



Ploughman supper included

Bring your own drinks (glasses)

For information and tickets contact:

Hinchingbrooke House

Brampton Road, Huntingdon PE29 6BN

kjl@hinchbk.cambs.sch.uk

www.malawieducationlink.co.uk

Registered Charity number 1108460