

Prospectus



Hinchbrook School



OUR SCHOOL

It is my privilege to be Principal at Hinchbrook, and to welcome you warmly to our remarkable school.

Our Mission, Values and Key Focuses describe our clear and simple approach to the most important activity in the world; educating your people to be the best they can be.

Our **Mission** is to provide a high-quality education for all our students, so that they learn and achieve well, and develop as well-rounded young people ready to take their next steps and well-equipped to learn throughout their lives.

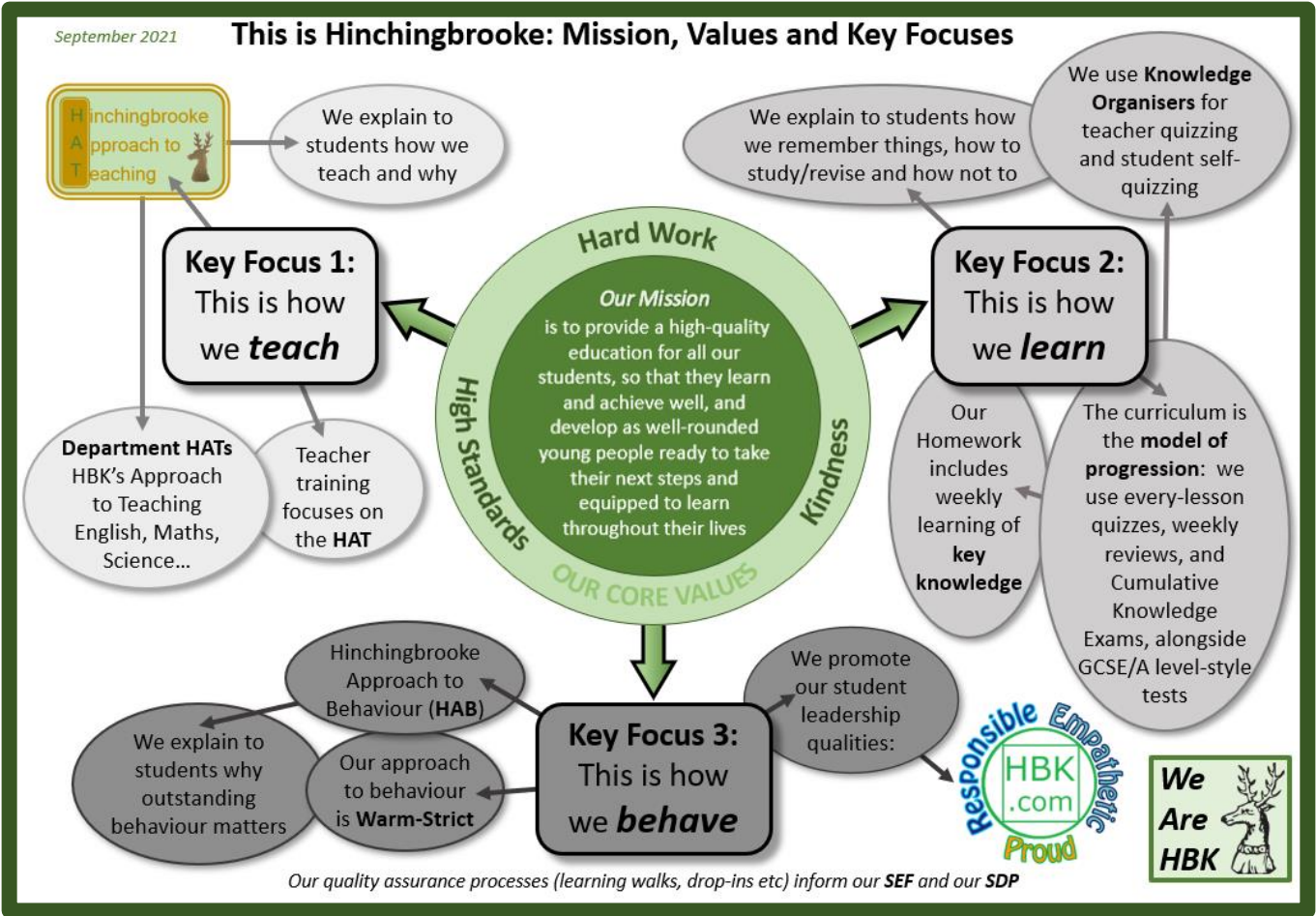
Our **Core Values** are **Hard Work**, **High Standards** and **Kindness**; we promote these values relentlessly through assemblies, tutor time, lessons and our actions every day.

Our **Key Focuses** are on how we should teach, how great learning happens and how everyone should behave so that everyone learns really well.

We are Hinchbrook.



Mark Patterson
Principal



THE HOUSE SYSTEM

The House system at Hinchingsbrooke aims to prepare our students to:

Participate

All students have opportunities to take part in a range of varied and diverse activities to actively contribute to their House.

Respect

Our students show empathy and understanding which helps to create a positive and respectful ethos within their house, school and wider community.

Collaborate

There is equality of opportunity for all to participate in the House system. Through working together students at Hinchingsbrooke learn to demonstrate teamwork, commitment and fair play.

Inspire

Students are inspired by the support offered through the House system and this helps create positive role models and leaders amongst the student body. We have five school Houses at Hinchingsbrooke: Cromwell, Montagu, Pepys, Vesey and Wylton and there is a real sense of House pride and competitiveness. Each House has a member of staff as House Leader and there are elections held for House Captains.

During the school year there are various Inter-House competitions such as the castle competition, cross country, HBK's Got Talent and debating. Students earn points for their House via our reward system and there is a healthy competitiveness to be the winning House at the end of the year.



THE CURRICULUM

*“...A broad,
balanced
and
relevant
curriculum”*
Ofsted



The curriculum is diverse and exciting at Hinchingsbrooke. We have adapted our curriculum to ensure all of our learners are able to thrive and succeed. We have a 2 year Key Stage 3 and students begin their option choices for GCSE in Year 9.

There is an extremely wide range of subjects to choose from in both Key Stage 4 and Key Stage 5 from GCSE Astronomy to A Level Photography or A Level Criminology. There is also an impressive range of trips and visits to support our curriculum in addition to our



Curriculum Collapsed days where students focus on the World or Work, Diversity or Literacy. On these days we have a large number of visitors in school to further enrich our curriculum and allow our students to develop into fully rounded individuals who are ready to take their place in society. For more information on our curriculum please refer to our website.



EXTRA-CURRICULAR

Our basic pattern of daily lessons is enhanced by a whole range of exciting opportunities for students to extend their learning in other ways.

Hinchingbrooke has a huge range of activities to offer its students outside the timetabled school day. We have a long-standing tradition of providing a stimulating and varied timetable of extra-curricular clubs. This was recognised as outstanding by Ofsted.

Each week we have over 40 clubs on offer, covering topics as varied as gaming and modelling, rugby, football and Pop Choir. We know that extra-curricular participation is good for our students; it can improve their behaviour and academic performance as well as providing them with opportunities to develop interests and friendships.



SPORTS

Competitive sport is an essential element of the school year. Every week our teams take part in fixtures against other schools in the area. Some teams even have residential trips where they have specialist coaching and take part in tournaments against other schools from various regions in England.



As well as the fantastic sporting facilities and opportunities for our students, Hinchbrook organises and promotes sports through the community as a 'Sports Hub' for Huntingdonshire.

Our high quality astro-turf, extensive outdoor and indoor facilities and swimming pool ensures that sport is enjoyed by everyone from pre-school to adult.

The state-of-the-art £2.4m sports hall (opened in 2016) secures this excellent legacy for future generations.



Our fully equipped
professional standard
Performing Arts Centre and
Dance Studio hosts top class
performances across the
whole range of artistic areas



THE SIXTH FORM

'...a unique and spectacular learning environment' Ofsted

Our Sixth Form has high progression rates to Russell Group Universities, has had success in recent years with both Oxbridge and medical school applicants, but also provides a strong and bespoke programme of guidance whether you are planning on going to university, into training or the workplace.

Recent significant expansion of our Sixth Form is largely the result of an increase in applicants from all over the county, with over 25% who have joined us being from other schools. We pride ourselves in giving our external students a particularly warm welcome.

We welcome your interest in joining our Sixth Form and look forward to offering you a place if you satisfy our minimum entry requirement of five Grade 5s or above including Maths and English.

We hold an annual Open Evening in the Autumn term when you can come and view our facilities, hear how we promote our young people and ask any questions you may have.



"The large and popular Sixth Form provides a good education for students and helps them with their next steps into higher education." Ofsted



Care, guidance and support in the Sixth Form at Hinchbrook is something of which we are very proud. Even though we are a very large Sixth Form each of our students is treated as an individual and receives support and guidance from a professional Sixth Form tutor. You will be assigned a tutor who will support you through your A level and Level 3 courses and who will be responsible for helping you make appropriate choices about your future career path.

If you plan to make an application to university your tutor will work with you on the application and will write your reference.

You will meet regularly with your tutor to discuss progress and any concerns you or your subject teachers may have about your effort and achievement. You will also set targets for yourself, in agreement with your tutor and subject teachers and your progress towards achieving these targets will be monitored in your regular tutor meetings.

Parents and Carers are invited to attend subject review meetings with you in the Spring term and we will work in partnership with you and your parents and carers to support both your academic and personal development.

Our website contains a separate section for the Sixth Form and you can hear and see what is on offer by watching the video.



SUPPORT & INCLUSION

Over 97% of parents and carers state that their child is happy at school and making good progress

All students will need support and help from time to time during their attendance at school. To prioritise and identify where the support is most needed we have drawn a simple model where:

Wave 1 support is for all eg differentiated work and high quality teaching in every classroom with teaching assistants deployed based on individual need

Wave 2 support is for the many eg mentoring programmes for targeted students, intervention groups and utilising external providers as well as our own teachers, teaching assistants and student ambassadors.

Wave 3 is for a few eg physiotherapy, 1 to 1 literacy support, counselling

Wave 3 ➡ FEW

Wave 2 ➡ MANY

Wave 1 ➡ ALL

THE GATEWAY SCHOOL

The Gateway School exists to provide an alternative educational environment for the small number of students who find mainstream too daunting. It is for those with medical or emotional and behavioural difficulties who require an individual bespoke timetable.

This could include full-time attendance at the Gateway School where all lessons and social times are delivered;

part-time attendance, where students may attend mainstream lessons and social times such as break and lunchtime and a select number of lessons in the Gateway; or, students may attend part-time in the Gateway and spend the rest of their time out of school at college, work or at a training placement.

A few students spend all their time at these provisions and do not attend school but are regularly visited by the Gateway staff. All students who attend either have an Education and Health Care Plan (EHCP) or Early Help Assessment (EHA) or a Pastoral Support Plan (PSP). Access to the Gateway School is based on internal referral which develops a bespoke package of support based on the individual needs of the student.



- | | | |
|-----------------|------------------------|------------------|
| Gateway School | Early Help Assessments | Education Health |
| College | Child & Adolescent | and Care Plans |
| Work Experience | Mental Health Services | SEN Support |
| | Young Carers | Medical Needs |
| | Children in Care | |



“The schools’ onsite ‘Gateway’ provision provides a high quality individualised provision for students with a wide range of frequently complex needs, and who often face significant challenges. Students and their parents and carers are exceptionally positive about the impact of this support.” Ofsted

FACILITIES FOR THE SCHOOL AND COMMUNITY

The Performing Arts Centre (PAC) is the base for our extensive Creative and Performing Arts and Music departments, where we host concerts, productions and events as well as being used for student assemblies.

The PAC is also an exciting venue for Conferences, Product Launches, Exhibitions, AGMs, Concerts and Theatrical Productions.

Our sporting facilities are first class. We have a 3G all-weather pitch, extensive rugby and football pitches, a physiology laboratory and state-of-the-art indoor sports halls.

HBK Leisure is a school based business who manage the community facilities and who promote community participation by running out-of-hour sporting activities available for all.

The state-of-the-art £2.4m sports hall (opened in 2016) enhances the already comprehensive facilities for the school and the wider community.



ESSENTIAL INFORMATION

KEY CONTACTS

Position	Email Address	Telephone No
Lower School Administrator	lowschool@hbk.acesmat.uk	01480 420522
Middle School Administrator	middleschool@hbk.acesmat.uk	01480 420506
Upper School Administrator	upperschool@hbk.acesmat.uk	01480 420515
Year 7-11 Admissions	admissions@cambridgeshire.gov.uk	01223 699200
HBK Leisure	hbkleisure@hbk.acesmat.uk	01480 420531
Main School	communications@hbk.acesmat.uk	01480 375700

The School Day

- 8.35am Warning bell
- 8.40am Tutorial/Assembly
- 9.00am Period 1
- 10.00am Period 2
- 11.00am Break
- 11.20am Period 3
- 12.20pm Period 4
- 1.20pm Lunch
- 2.05pm Registration
- 2.15pm Period 5
- 3.15pm End of School Day



CONTACT US

Hinchingbrooke School
Brampton Road, Huntingdon
Cambridgeshire PE29 3BN

Tel: 01480 375700 **Fax:** 01480 420536

Email: communications@hbk.acesmat.uk

Website: hinchingbrookeschool.net

Twitter: @HBK_School



Hard Work

High Standards

Kindness