



Hinchingbrooke School

Inspiring excellence
Fulfilling potential

Sixth Form Prospectus 2015 – 2016



"We are delighted that you are considering Hinchingbrooke for your sixth form education."

Charlie Fordham

Director – Sixth Form

INTRODUCTION

We are delighted that you are considering Hinchingsbrooke for your sixth form education.

Our Sixth Form provides a unique, dynamic and highly personalised experience. We pride ourselves on offering an inclusive and all-round education, combining academic rigour with extensive opportunities outside the classroom, all delivered by a dedicated team of high-quality professionals, in a setting that is the envy of many and which is conducive to academic study. Our aim is for our students to grow as uniquely talented individuals and as socially aware global citizens, making the best possible progress both academically and personally.

We offer you a flexible and wide range of options within our broad curriculum and our staff demonstrate a relentless commitment to support you in every way we can, to become self-managing, independent learners with the knowledge, skills and aptitudes to progress to the next stage of your life.

We have formed very good links, both with local employers and universities, in order to offer you high quality, relevant advice and guidance. We engage external speakers to inspire our students, promote debate and broaden horizons.



You will be valued, challenged, nurtured and developed within the Sixth Form, and leave our school better prepared to take your next steps within higher education or training, or to enter the world of work.

If you would like to be part of a cohesive Sixth Form that is engaging and enjoyable, and that offers an extraordinary range of opportunities, then we very much look forward to your application.

CHOOSING YOUR SUBJECTS

We offer an extensive choice of subjects in our curriculum, which are offered through a number of different 'pathways' in order to accommodate the varying needs of our students (see the Pathways diagram on page 8).

When you are choosing your subjects, it is important that you choose subjects that interest you and which you enjoy, as these are likely to be the ones in which you will do best. However, you should also consider which subjects relate to your future aspirations, and be mindful of the entry criteria for the courses you may wish to study beyond school. Several of the courses will be in subject areas which you have never studied before and you should research these carefully before you make your final choices.



To help you decide which courses and subjects to take, it may be helpful to talk over your options with your family and friends, your teachers or tutor. Hopefully, our Open Evening on December 3rd will answer many of your questions, but if you feel you need any further help, please do contact the sixth form team at Hinchingsbrooke any time.

Important national changes

You may well be aware that there has been a national reform of A Level courses which will be rolled out over the next few years. At Hinchingsbrooke we are entering all of our students for **two year courses**, in most cases in three 'core' subjects, but in some cases four subjects if this is appropriate (see our Pathways diagram on page 8). This means that whichever courses you choose, our expectation is that you will be carrying them all on into Year 13.

At the end of Year 12 you will either be taking an AS level examination (for those courses in 'Phase 2') or an internal examination where there is no AS ('Phase 1' courses). Either way, the final examination will take place at the end of the two years in Year 13.



As well as your three or four core subjects, which you take over a two year period, we ask every student to take a further course to provide greater breadth in their learning. In many cases this will be the Extended Project. This is an AS Level research project which provides excellent preparation for you for higher education or for employment. It is designed to foster independence, resilience and maturity as a learner, and is taught in a university style through seminars and supervisions. You can pursue any topic of your choosing, varying from designing a computer game or a ball gown, to researching the advantages of wind farms, exploring why criminals commit the crimes they do, or writing the opening of (or all of) your first novel. As an alternative to

the extended project, some students will use this time to redo Maths or English GCSE, or to pursue other AS qualifications.

For the full, list of courses please go to page 9.

ENRICHMENT

At Hinchingsbrooke we offer many exciting and wide-ranging enrichment opportunities. There are a plethora of activities from many diverse areas such as music, dance, drama, sport, and engagement in the school council, which can involve leadership in several areas of school life, and community service.

We ask all Year 12 students to be involved in some aspect of serving the community through our CAS24 programme. There are also several student-led enrichment activities, such as the Film Club and the student newspaper. We invite external speakers to address relevant groups of sixth formers on a weekly basis, to add breadth and depth to what they are experiencing in the classroom.

We believe that you will make the most progress in your learning when you see clearly its importance in the world outside and beyond the school and, to that end, many subject areas organise trips to support your learning.



*"There is a wide variety of enrichment opportunity available, you can create any club or society you want."
(Joanna Chen, Year 13)*

STUDENT VOICE AND STUDENT LEADERSHIP

We are very committed to hearing, representing and responding to students' needs, and so have developed our Student Voice processes considerably over the last year. There are a wide variety of opportunities for sixth form students in Year 12 and 13 to take up leadership positions and contribute to the busy working life of the school.

Sixth form students run the 'Whole School Council' which oversees many of the student-led activities which take place in the school. In addition there are Lower, Middle and Upper School committees to address issues and agendas for those specific age groups. These are also run by sixth form Student Council Leaders.



The school has a very strong House system and again, there are a large number of leadership positions in Year 12 and Year 13 to promote the many House activities which go on with all the year groups throughout the year.

Furthermore, the student input into the school's recruitment processes for staff, is both well established and highly valued. Student panels are chaired by Year 13 students

and have been praised for their professionalism and insightful questioning by many of the interview candidates.

Hinchingbrooke Student Council proudly boasts that it is "a student-led and student-powered organisation".

"There have been so many great opportunities to get involved in leadership roles. I've really enjoyed being a part of the Student Council, which has also provided invaluable experience of student leadership."
(Tooba Khokar, Year 13)

SUPPORT

Your teachers will all be experts in their respective fields, sharing their knowledge with you through innovative and inspiring lessons. You will be encouraged to discover things for yourself and ask questions to deepen your learning. Subject teachers will stretch and challenge you, and you are expected to work hard in return. Our teaching staff will go that extra mile to support you outside of your lessons, meeting with you in study periods, at lunchtimes and after school to reinforce your learning.

We timetable all Year 12 students for periods of Private Study, which are semi-supervised sessions in which you can build on the work done in class.

Every student also has a personal tutor who has the primary role in and responsibility for overseeing your academic and personal progress during your time in the sixth form. They are also the first port of call for parents and they seek to work in partnership with, and to promote the well-being of, the students.

Your tutor will meet with you regularly to support and guide you from your enrolment and induction at the beginning of Year 12, to your application for employment or to university, as you consider what to do after Year 13. We are proud of our commitment to high levels of care within our pastoral team, and our aim is to continue to develop the mutually supportive atmosphere that has undoubtedly been built up in recent years in the sixth form.



Whilst academic and pastoral guidance is primarily provided by tutors, there is more specialist and personalised support available through Student Services. The Director of Student Services heads up two distinct but complimentary services: Learning Support, and Safeguarding and Inclusion.

The Safeguarding and Inclusion Manager, alongside the school's counsellor and nurse, co-ordinate the social and emotional interventions and the SENCO and her team supports students with learning difficulties. Both work closely with tutors and the sixth form team and the school may engage additional external support if necessary.

The Learning Support Team led by the school's Special Educational Needs Coordinator (SENCO), offers support to students in school who have "needs that are additional to or different from those of other students at school" including needs in areas such as communication and interaction, cognition and learning, behavioural, social and emotional development, and sensory and physical needs,

The support for these students includes:

- Placement on the school's SEND Register
- Assessment and advice from specialist staff, for example Speech and Language Therapist and Educational Psychologist
- Specialist programmes, such as physiotherapy and the use of purpose built disabled facilities.
- Development of an Education, Health, and Care Plan.
- Teaching Assistant (TA) support in the classroom or in small withdrawal groups



SEN and Disability Arrangements: Full details of the school's policies on Safeguarding and Child Protection, Behaviour and Attendance, SEN, Equality, Anti Bullying, plus Supporting Children at School with Medical Conditions are available via the School Policies link on the school website.

Bursaries: Information about bursaries is available on our website.

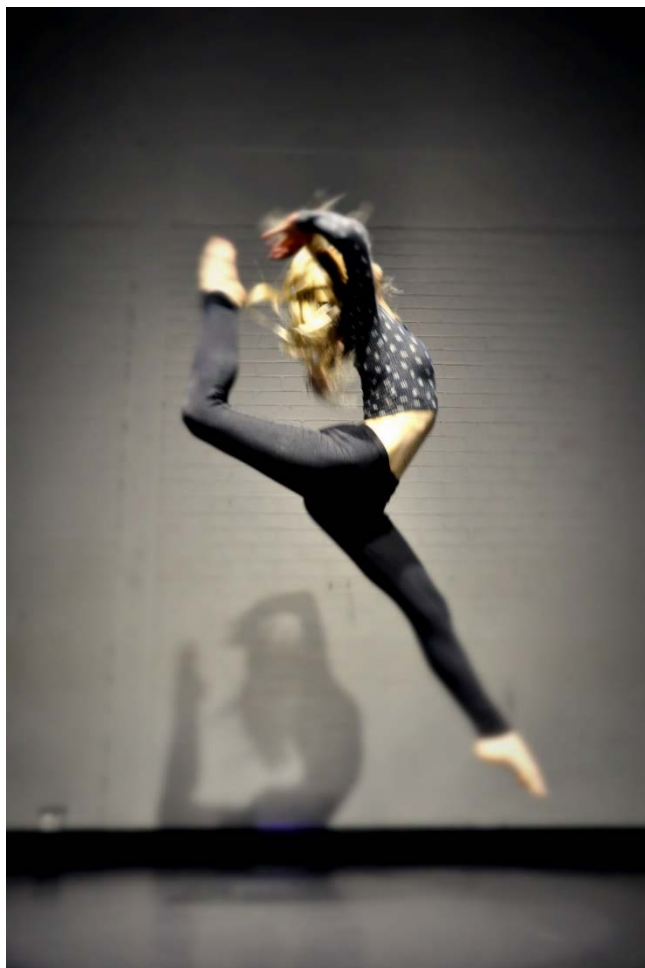
"Although it's a big step up the teaching support is excellent. They are always happy to help."
(Shannon Phillips, Year 12)

"The teachers are there to help. They will give you excellent support – all you have to do is ask."
(Evie Belgrove, year 12)

TRANSITION & INDUCTION

It's exciting for us to see the students who have been a part of the school since Year 7 progress through Year 11 and join us here in the sixth form. This brings a tremendous sense of family and continuity to the school, which is furthered when those students then feed back into the life of the Lower and Middle School by leading, volunteering and supporting in various ways.

However, whilst the majority of the approximately 400 students in our sixth form is made up of students who have progressed from Hinchingsbrooke School, over 25% are from other schools. We make a special effort to give our external students a warm welcome and take pride in the fact that they are often prepared to travel to reach us. In no time they are fully integrated as Hinchingsbrooke sixth form students and often take leadership roles very soon after joining, thus bringing a freshness and vitality to our community.



We have a structured induction period in which we create opportunities for you to assess your learning needs in your chosen subjects. It also provides a chance to settle into the new environment of the sixth form and adjust to the expectations and freedoms. As part of induction we organise two transition days at the end of Year 11, after your GCSEs. One day has more of a social focus and the other is more subject based. Both are important and helpful in making the transition to our sixth form as smooth as possible.

"You have more independence and greater responsibility, so embrace it"
(Justin Groves, Year 13).

PROGRESSION

Our experienced tutors will give you all the help and support you need to make decisions about the next steps after your time in the sixth form here. We offer structured tutorial careers sessions and bring in a considerable range of outside speakers to help you to explore multiple possibilities regarding university, gap years, employment, apprenticeships or training.

"I had really superb support in finishing my UCAS application."
(Danny Darbyshire, Year 13)

"Teachers, particularly tutors, give you all the help you need with UCAS and personal statements."
(Adrian Vuylsteke, Year 13).



RESOURCES AND FACILITIES

Hinchingbrooke Sixth Form is exceptionally located in Hinchingbrooke House, a grade 1 listed building. The setting is unique and beautiful, but is also a modern learning environment. Learners' study and social facilities are based in the House and have been consistently upgraded over the years to provide the very best resources and facilities in terms of designated private study areas and social spaces. Access to ICT is easy through the spacious IT suites. The whole of the House now has Wi Fi access which enables

students' use of laptops and mobile devices to access the school broadband network.



The Year 12 and Year 13 Common Rooms are equipped with leather sofas, and there are other comfortable and charming spaces in which students can relax and enjoy the less busy parts of the day. We have an excellent 'Costa-style' canteen, popular with students (and staff), not least the fresh coffee and much-praised 'curly fries Tuesdays'.

"Hinchingbrooke is a great place to learn. So much history and a fab setting"
(Hannah Crofts, Year 12).

Student Profiles

Achieved mostly C grades at GCSE

Will have an average point score of 43 or less, but with a minimum of 5 A* - C

Achieved on average B grades at GCSE

Will have an average point score of between 43 and 46

Achieved on average A/B grades at GCSE

Will have an average point score of between 47 and 52

Achieved mostly A/A* grades at GCSE

Average point score of 52 or above

Advised Curriculum Pathways

Students on this pathway might be expected to be progressing to university. They will do 3 A2 subjects, choosing from courses such as:

| | |
|---------------------------------|---|
| Applied IT (Single award) | Fine Art |
| Applied Health & Social Care | Music Technology |
| (Single and Double award) | PE |
| Applied Business (Single award) | Sociology |
| Contemporary Fine Art | Sport BTEC |
| Dance BTEC | Three Dimensional Design |
| Drama and Theatre Studies | |
| Film Studies | <i>(students may be in a position to take a subject from the list below, but should check entry requirements)</i> |

Students on this pathway might be expected to be progressing to university. They will do 3 A2 subjects from the list above, and/or those below plus an AS (in most cases the Extended Project):

| | |
|-------------------------|-----------------------------|
| Business | German |
| DT: Graphics | Government & Politics |
| DT: Textiles | History (European or World) |
| DT: Resistant Materials | Music |
| English Language | Philosophy |
| English Literature | Psychology |
| French | Spanish |
| Geography | plus the Extended Project |

Students on this pathway might be expected to be progressing to a top university. They will do 3 A2 subjects plus an AS (in most cases the Extended Project), from the lists above, and/or those below, but they would be encouraged to do at least two facilitating subjects**:

Biology
Physics
Chemistry
Maths with Mechanics
Maths with Statistics

Students on this pathway might be expected to be progressing to a top university. They will do four subjects (though in some cases the fourth may be Further Maths) from the lists above, but they would be encouraged to do at least two, and preferably three, facilitating subjects

**'facilitating subjects' are those required for entry on to academic courses at selecting universities, such as those in the Russell group.

| Grade | A* | A | A/B | B | B/C | C | D | E | F | G |
|--------|----|----|-----|----|-----|----|----|----|----|----|
| Points | 58 | 52 | 49 | 46 | 43 | 40 | 34 | 28 | 22 | 16 |

Courses From 2015

Over the next pages are the courses which we will be offering in the sixth form from September 2015.

Please bear in mind that there has been a huge degree of change at a national level in terms of the structure, content and assessment of Level 3 courses. As a result of the changes, which are being phased in over time, we are still developing our plans in some areas, so that we can be responsive to the changes in detail, and to our students' needs.

As in any other year, the information in this prospectus describes the courses we fully intend to offer in as much detail as we have at present. We do, however, reserve the right to make changes according to circumstances.

In order to qualify for the sixth form you need 5 GCSEs at A* to C, including at least one of English or Maths. Beyond this several subjects have their own entry requirements, as listed on the pages that follow.



As well as three or four core subjects, which students take over a two year period, we will ask every student to take a further course to enhance the breadth in their learning. In many cases this will be the Extended Project, which is the equivalent of half an A Level. This is a research project designed to foster independence, resilience and maturity as a learner, and is taught in a university style through seminars and supervisions. As such it prepares students well for higher education and for employment. Students can pursue any topic of their choosing, with the outcome being a dissertation, research project, performance, or artefact.

Students will be told about this during the autumn term, and will complete it between January of Year 12 and December of Year 13.

For those students who have not obtained a GCSE C grade or above in English and Maths there will be the opportunity to redo these qualifications.

Departmental Contacts

School Switchboard 01480 37500

| Role | Name | Email | Ext |
|-------------------------------|-----------------|--|------|
| Director of Sixth Form | Mr C Fordham | cwf@hinchbk.cambs.sch.uk | 5745 |
| Deputy Director of Sixth Form | Mrs G Miller | gem@hinchbk.cambs.sch.uk | 5742 |
| Senior Tutor Achievement | Mrs M Luscombe | ml@hinchbk.cambs.sch.uk | 5740 |
| Senior Tutor Development | Mrs H Weightman | haw@hinchbk.cambs.sch.uk | 5744 |
| Upper School Administrator | Mrs C Pinkney | czp@hinchbk.cambs.sch.uk | 5448 |

| SUBJECT | Head Of Department | Email | Ext |
|--------------------------------|--------------------|--|------|
| Art | Mrs A Lombard | aml@hinchbk.cambs.sch.uk | 5768 |
| Business Studies & Economics | Mr M Addis | mta@hinchbk.cambs.sch.uk | 5710 |
| Dance | Mrs M Trewin | mlt@hinchbk.cambs.sch.uk | 5785 |
| Design & Technology | Mr R Dunkley | rwd@hinchbk.cambs.sch.uk | 5767 |
| Drama & Theatre Studies | Mrs N Akielan | nla@hinchbk.cambs.sch.uk | 5605 |
| English | Mrs H Fullard | hmf@hinchbk.cambs.sch.uk | 5759 |
| Film Studies | Mr P Lloyd | pl@hinchbk.cambs.sch.uk | 5743 |
| Food & Textiles | Mrs A Crabtree | alc@hinchbk.cambs.sch.uk | 5769 |
| Geography | Mr B Evans | bje@hinchbk.cambs.sch.uk | 5795 |
| Global Perspectives | Mrs C Black | cmb@hinchbk.cambs.sch.uk | 5795 |
| History | Mr J Leigh | jd1@hinchbk.cambs.sch.uk | 5761 |
| ICT | Mr C Kilby | crk@hinchbk.cambs.sch.uk | 5802 |
| Information, Advice & Guidance | Mr A D Bennett | adb@hinchbk.cambs.sch.uk | 5767 |
| Maths | Mr A K Bennett | akb@hinchbk.cambs.sch.uk | 5788 |
| Languages | Mrs T Henriksen | tmh@hinchbk.cambs.sch.uk | 5716 |
| Music | Mr W Cooke | wrc@hinchbk.cambs.sch.uk | 5783 |
| PE | Mr J Turnbull | jat@hinchbk.cambs.sch.uk | 5785 |
| RE & Philosophy | Mr P Chester | pjc@hinchbk.cambs.sch.uk | 5798 |
| Science | Mrs R Alford | rsa@hinchbk.cambs.sch.uk | 5773 |
| Social Science* | Mrs B Howells | bh@hinchbk.cambs.sch.uk | 5747 |

* Social Science: Psychology, Sociology, Law, Politics and Health & Social Care, Psychology & Government and Politics

Art A Level (Two year course only) & AS Level (One year course only)

Why Study Art?

- If your intention is to follow a career involving art and design or in one of the creative industries, such as: architecture, graphic design, computer aided design, product design, textile design, surface design, work in aspects of film and TV, photography, illustration, etc.
- As a worthwhile experience for students wishing to use it as part of their entry requirements into other subject areas.
- To study as a subject that may be either a positive contrast or complement to your other chosen subjects.
- Because you will build up your technical, analytical, investigative and exploration skills, using a variety of materials and media. The course is designed to encourage learners to develop skills, creativity, imagination and independence based on personal experience, taught skills and critical understanding. Learners will show this through their responses to a range of stimuli.
- It provides an opportunity for learners to take a personal interest in why Art and Design matters and to be inspired and changed by studying a coherent, worthwhile course of study and gain experience of the working practices of individuals, organisations and creative and cultural industries.
- It provides freedom for learners to experiment and take risks with their work whilst developing their own style.

What Does The Course Involve?

We are offering 3 different 2 year A level courses.

1. **Fine Art: Painting & Drawing**
2. **Contemporary Fine Art: Including Printmaking and New Media**
3. **Three-Dimensional Design**

1. Fine Art: Painting & Drawing

Students will work in areas of Fine Art, such as: portraiture, landscape, still life, human form, abstraction, narrative.

Materials and techniques could include: oil painting, acrylic painting, watercolour painting, mark making in drawing materials, mixed media.

Leading To A Career In?

Further courses such as: Art Foundation Course

Degrees and careers in: architecture, fine art, art historian, graphic design, computer game design, photography, illustration, museum and curating work.

2. Contemporary Fine Art: Including Printmaking

Students will work in areas of Fine Art, such as: portraiture, landscape, still life, human form, abstraction, narrative, experimental imagery, installation, working in a genre.

Materials and techniques could include:

mark making, mixed-media, casting, glazing, collage, printing, collograph, intaglio, digital manipulation, installation, sculpture.



Leading To A Career In?

Further courses such as: Art Foundation Course

Degrees and careers in: architecture, fine art, art historian, graphic design, computer game design, photography, illustration, museum and curating work.

3. Three-Dimensional Design

Students will work in areas of three-dimensional design, such as: craft and commercial ceramics, sculptural ceramics.

Materials and techniques could include: ceramics - throwing, hand building techniques, casting, modelling, casting, construction, carving, wire, plaster and mixed-media applications. Combining ceramics with other materials such as wood, metal and glass.

Leading To A Career In?

Further courses such as: Art Foundation Course

Degrees and careers in: sculpture, theatre design, product design, work in aspects of film and TV, such as stage design and modelling.

How Will I Be Assessed?

Exam board: OCR. This is a two year course with no AS at the end of Year 12. All Art A Level courses follow the same structure over the two year program:

Component 01: Personal investigation

Students will produce two elements:

(i) a portfolio of practical work showing their personal response to either a starting point, brief, scenario or stimulus, devised and provided by the centre

(ii) a related study: an extended response of a guided minimum of 1000 words.

This element is internally assessed and externally moderated and is 60% of the final grade

Component 02: Externally set task

Issued in the February providing students with seven themes, each with a range of written and visual starting points, briefs and stimuli, of which they chose one to respond to.

15 hour final practical exam

This element is internally assessed and externally moderated and is 40% of the final grade

There is NO written exam.

What Are The Entry Requirements?

5 A*-C. Minimum of a C at GCSE Art.

AS Fine Art

This is a one year course allowing students to complement and show a wide breadth of study in their subjects to universities. The content will be of a similar nature to the A Level Fine Art: Painting & Drawing.

Assessment is by externally set tasks delivered from the beginning of January, providing students with seven themes, each with a range of written and visual starting points and stimuli, of which they chose one to respond to it. There is a 10 hour final practical exam. This element is internally assessed and externally moderated and is 100% of the final grade.

Entry criteria is 5 A*-C. Minimum of a B at GCSE Art.

Why Study Biology?

In Biology you will develop practical skills by planning experiments, collecting data, analysing experimental results and making conclusions. You will also learn how scientific models are developed, the applications and implications of science, the benefits and risks that science brings and the ways in which society uses science to make decisions.

Biology is a science at the forefront of some of the most exciting and controversial issues in the news today. Current publicity surrounding genetic engineering, environmental and medical developments have highlighted the need for an understanding of such issues. Biology seeks to explore these areas of study to provide an appreciation of the living world.

What Does The Course Involve?

Module 1 – Development of practical skills in biology: skills of planning, implementing, analysis and evaluation

Module 2 – Foundations in biology: cell structure and membranes; biological molecules; DNA; cell division, diversity and organisation

Module 3 – Exchange and transport: exchange surfaces; transport in animals; transport in plants

Module 4 – Biodiversity: evolution and disease; communicable diseases and prevention; immune system; biodiversity; classification and evolution

Module 5 – Communication, homeostasis and energy: communication and homeostasis; excretion; neuronal communication; hormonal communication; plant and animal responses; photosynthesis; respiration

Module 6 – Genetics, evolution and ecosystems: cellular control; patterns of inheritance; manipulating genomes; cloning and biotechnology; ecosystems; populations and sustainability

How Will I Be Assessed?

Exam Board OCR. This is a two year course with no AS at the end of Year 12. All examinations are taken in the Summer of Year 13. For the full A-level course there are 3 papers plus a practical endorsement.

Leading To A Career In?

Undergraduate degree courses: Medicine, Biomedical Sciences, Life Sciences, Forensic Science, Physiotherapy, Veterinary medicine, Biochemistry, Paramedical work, Nutrition, Ecology, Biology, Marine Biology, Sport Science, Food Science, Environmental Monitoring and the expanding field of Microbiology and Biotechnology.

There are also numerous career paths that will utilise the knowledge and skills gained at A level Biology.

What Are The Entry Requirements?

Average GCSE score of 46, B in Maths, B in English, and:

- For Triple Science Students, grade A in Biology, grade B's in Physics, Chemistry.
- For Double Science Students, grade A in Additional Science, grade B in Core Science.

Why Study Business Studies?

A Level Business will give you an insight into the dynamic world of business. It is not just a theoretical subject, it is about real life. This combination of academic challenge and practical focus makes the prospect of studying A Level Business a very useful subject for the world of work and university. You will learn about businesses and the way they operate in today's society. You will investigate problems which real businesses are currently facing and use your initiative to develop possible solutions.

You will get opportunities to put your ideas, opinions, independence of thought and initiative to practical use and development of transferable skills which are relevant to the world we live in – problem-solving, creative thinking, research, evaluation, communication, personal development and decision-making.

What Does The Course Involve?

The main topic areas will include the following:

- Business objectives and strategic decisions
- External influences facing businesses
- Marketing and marketing strategies
- Operational strategy
- Human resources
- Accounting and financial considerations

In your study of Business you will look at a variety of firms in different industries and need to have an interest in the world around you. To start with you will focus on what businesses are, why they exist, what their aims are, and how one measures their success.

You will then move on to look at the role of markets, the economy and how competition will affect a business. You will also look at how other external factors affect the business such as the environment, government and technology.

You'll look in detail at the various functional strategies that business use to be successful. How can they change their marketing, finance, operations and human resources in order to improve their performance?

Finally you will learn how to analyse the strategic position of the business using tools like financial ratios. Then you will see how firms choose their strategic direction and choose which markets to compete in and what products to offer. Change is a constant in business and you will investigate how firms manage changes that take place.

How Will I Be Assessed?

Exam board: OCR. This is a two year course with no AS at the end of Year 12. 100% exam based.

Leading To A Career In?

Degrees in Business, Management, Human Resources, Accountancy, Law, Finance, Philosophy, Politics and Economics, Sociology and Psychology. Careers with a Business degree have high earning potential. Career possibilities include: banking, insurance, advertising, distribution, sales, accounting, law, education, central or local government, business consultancy, entrepreneurship.

What Are The Entry Requirements?

5 A*-C.

Why Study Cambridge Technical Business?

Just as in the A Level this course will give you an insight into the dynamic world of business. It is not just a theoretical subject, it is about real life. You will learn about businesses and the way they operate in today's society. You will investigate problems which real businesses are currently facing and use your initiative to develop possible solutions.

Cambridge Technicals are vocational qualifications that are designed to give you a work-focused alternative to A Levels. They've been designed to give you opportunities to demonstrate and develop the practical application of knowledge and understanding in the areas of work that appeal to you. This will enable you to develop your research skills as you work, both independently and with colleagues, to progress through your qualifications.

What Does The Course Involve?

In your study of Business you will look at a variety of firms in different industries and need to have an interest in the world around you. To start with you will focus on what businesses are, why they exist, what their aims are, and how one measures their success.

As a vocational course you will have the opportunity to learn about business through real situations, visiting local businesses and learning from visiting speakers. The units you complete will be based on real businesses, giving you a practical understanding of this subject.

You will study six units during your course covering a range of relevant business topics, learning and applying your knowledge of real businesses. You will learn about the business environment and how this influences the different business organisations that can exist. You will also learn about business resources, including human, physical, technological and financial resources and how these are used and managed within a business. You will be provided with an applied understanding of the role of the marketing function, with particular emphasis on the role of marketing research and how it contributes to marketing planning and the development of the marketing mix for a target group of customers. You will also undertake the organisation and management of a real business event, learning about the important elements of running an event.

If you prefer to learn in a way that's practical and work-related, then Cambridge Technicals are ideal. The great thing about them is that they keep your options open – so if you're not fully convinced that a vocational way of learning is right for you, Cambridge Technicals keep the door open for a move to higher education further down the line, providing you with UCAS points equivalent to an A Level.

How Will I Be Assessed?

Exam Board OCR. Assessed entirely by coursework during the two years. You will receive results from each unit you complete throughout the course of your studies.

Leading To A Career In?

Employment, where you can put your new practical skills towards generating an income;
Further education, such as a higher-level qualification at school or college;
Higher education, such as a degree course at university; these Level 3 qualifications have UCAS points that make them the equivalent of A Levels in terms of access to university.

What Are The Entry Requirements?

5 A*-C.

Why Study Chemistry?

Are you open-minded, imaginative, argumentative, methodical, logical and determined? Do you wonder about the world, how it works and how mankind is changing it? If so, you will probably be interested in A Level Chemistry at Hinchingsbrook. It is a rewarding but demanding course, which sets the subject within a relevant and modern-day framework, without sacrificing intellectual rigour. It builds on the higher concepts learnt at GCSE and appeals to students who like to ask the questions 'why', 'how' and 'what' and are keen to find out the answers.

What Does The Course Involve?

Module 1 - Development of practical skills in Chemistry: skills of planning, implementing, analysis and evaluation

Module 2 – Foundations in Chemistry: atoms, compounds, molecules and equations; amount of substance; acid-base and redox reactions; electrons, bonding and structure

Module 3 – Periodic Table and energy: the Periodic Table and periodicity; Group 2 and the halogens; qualitative analysis; enthalpy changes; reaction rates and equilibrium (qualitative)

Module 4 – Core organic Chemistry: basic concepts; hydrocarbons; alcohols and haloalkanes; organic synthesis; analytical techniques (IR, MS)

Module 5 – Physical Chemistry and transition elements: reaction rates and equilibrium (quantitative); pH and buffers; enthalpy, entropy and free energy; redox and electrode potentials; transition elements

Module 6 – Organic Chemistry and analysis: Aromatic compounds; carbonyl compounds; carboxylic acids and esters; nitrogen compounds; polymers; organic synthesis; chromatography and spectroscopy (NMR).



How Will I Be Assessed?

This is a two year course with no AS at the end of Year 12. All examinations are taken in the summer of Year 13. For the full A Level course there are 3 papers plus a practical endorsement.

Leading To A Career In?

As far as employment prospects are concerned, Chemistry is a 'heavyweight' subject, essential for many scientific careers and highly regarded for non-vocational jobs. It has obvious relevance for medicine and veterinary science, as well as jobs in businesses involved in drugs and medicine manufacture, agriculture, brewing, food, biotechnology and forensic science – to name just a few. Any student qualified in Chemistry will automatically be regarded as someone who is numerate, well organised, self-motivated and intellectually adept – useful qualities to bring to any job.

What Are The Entry Requirements?

The minimum entry requirement is an average GCSE point score of 46, B in Maths, B in English and:

- For Triple Science Students, grade A in Chemistry, grade B's in Physics, & Biology.
- For Double Science Students, grade A in Additional Science, grade B in Core Science.

Why Study Dance?

Studying Dance prepares students for a lifetime career in the performing arts. Our Dance course sets out to create self-aware dancers who are highly educated and knowledgeable as well as versatile, creative, and technically accomplished.

What Does The Course Involve?

In a normal week you will attend some practical and some theoretical lessons. You will do this course alongside other A Levels.

You will study numerous units in Dance from the following list:

- Performing to an Audience (mandatory)
- Dance Performance
- Choreographic Principles
- Choreographing Dance
- Dance Improvisation
- The Healthy Performer
- Ballet Technique
- Contemporary Dance Technique
- Jazz Dance
- Movement Skills
- International Dance
- Dance Appreciation
- Urban Dance
- Site Specific Performance
- Exploring Contact Improvisation



How Will I Be Assessed?

The course is vocational and assessed through coursework – rehearsals, performances, research, written assignments, reflective writing, discussion, presentations and evaluations. Over two years, you will compile a portfolio of coursework. There will be certain key dates and deadlines for some pieces of work.

Half A Level equivalent – Year 1: BTEC Level 3 Certificate in Performing Arts: Dance

Full A level equivalent – Year 2: BTEC Level 3 Subsidiary Diploma in Performing Arts: Dance

Leading To A Career In?

University – study Dance at degree level.

Work – teachers / dance therapists / community workers / professional dancer / artist in residence

Support other courses – acting / singing / stage work / make-up / theatre

What Are The Entry Requirements?

5 A*-C.

Dance experience and an interest and understanding of Dance as an expressive art form is needed.

Dance at GCSE or BTEC Level 2 is preferred, but not essential.

Why Study DT Graphic Products?

Good design is vital to our world and our economy. Attractive styling attracts us to a product whilst graphic design is used to promote it through the medium of marketing.

The AS course provides the opportunity for students to develop their design and making skills to produce concept models of commercial products along with supporting graphical promotional material.

The A2 course allows students to apply the extensive design and making skills they have developed during the AS level course to a design and make project of their own choice. Their design will provide a solution to a 'real' problem linked to product design, interior design or architecture. Students are expected to work with a genuine client who will review their work at various stages during the project.

What Does The Course Involve?

AS level

- Product analysis
- Design for manufacture by a third-party
- Manufacturing skills using wood, metal and plastic in a graphic context
- General theory of materials and processes

These areas of study are prescribed by the examining board but the briefs set allow students to express themselves as individuals within the subject area. The aim of the study is to provide students with a breadth of experience that they may not cover through personal choice and to broaden their skills base for study at A2 level and beyond. The areas of manufacturing study cover both workshop and industrial processes.

A2 level

- A design problem of their own choice which will include research; the development of a design solution and the manufacture of a fully detailed outcome
- 20th Century design
- Modern design and manufacturing systems
- The impact of design and technological activities on the environment

How Will I Be Assessed?

There is still an AS at the end of Year 12. At both AS and A2 level, marks are split between coursework (60%) and examination (40%).

Leading To A Career In?

Students often go on to study product design, architecture, interior or graphic design at university. Students studying an Art foundation course find it helps to demonstrate a wider range of skills in a portfolio. It is a subject that links well other areas of the curriculum for those who may not want to pursue design as career.

What are The Entry Requirements?

5 A*-C. B in a design related subject at GCSE. Students achieving a C will require departmental approval.

Why Study Product Design Textiles?

You love textiles. From clothes to curtains and from upholstery to bedspreads, there's something about the look and feel of textiles that appeals to you.

Now you'd like a career that includes textiles. Perhaps as a textile designer, seeing your unique designs woven into the fabric of life. Or maybe as an interior designer or clothes designer. Whatever your relationship with textiles, this exciting and challenging course will help you understand more about textiles than you ever thought possible.

D&T Textiles A Level gives you the opportunity to develop your capacity to design and make products and to appreciate the complex relations between design, materials, manufacture and marketing. The subject will enable you to take a broad view of design and technology and to develop a wide range of skills, including working with others, thinking creatively and making quality products.

D&T Product Design Textiles also helps students develop a number of life skills, essential to successful study beyond Year 13: how to assemble data and assess it; how to investigate facts and use deduction; how to put over your point of view fluently; how to work as a team to achieve results; how to take responsibility for your own learning.

What Does The Course Involve?

Unit 1 is titled 'Materials, components and application'. It introduces you to subjects like understanding materials, production processes and the impact of cost and design. This is the academic part of year one.

Unit 2 is titled 'Learning through designing and making' and is the practical, coursework part of year one. You'll work on your own design with a range of materials and media.

Unit 3 is titled 'Design and manufacture'. This develops your holistic appreciation of the relationship between design and technology, or form and function. It is the academic part of year two.

Unit 4 is titled 'Design and making in practice' and is the practical, coursework part of year two. You will create a textile project and record the processes you went through.

How Will I Be Assessed?

Exam Board AQA. There is still an AS at the end of Year 12. 50% exam, 50% coursework.

Leading To A Career In?

Apart from being a textile designer, you can consider careers in interior design, fashion merchandising, buying, advertising, marketing, manufacturing, and teaching. It is a well-regarded course by universities due to its mix of creative and technical skills.

What Are The Entry Requirements?

5 A*-C, plus a C in a Design and Technology subject. We will consider students who did not choose a DT subject for GCSE based on a portfolio of both practical and design work.

Why Study Design & Technology: Resistant Materials?

Although many people will say that the UK is no longer a manufacturing nation, nothing could be further from the truth. Many of the traditional 'heavy' industries may have gone but there is still a strong demand for students in the design, engineering and construction industries who are capable of developing manufacturing solutions to today's problems. This course provides you with a solid base from which to develop your design and making skills, using the full range of resistant materials to become designers and engineers of the future.

In Year 13 the course then allows you to apply the extensive design and making skills you have developed during the AS level course to design and make projects of your own choice. Your design will provide a solution to a 'real' problem and must be capable of commercial production. You are expected to work with a genuine client who will review your work at various stages during the project.

Please note: Students who choose to study this subject cannot study Design and Technology: Graphic Products as well.

What Does The Course Involve?

AS level

- Product analysis
- Design for manufacture by a third-party
- Manufacturing skills in wood; metal and plastic
- General theory of materials and processes

These areas of study are prescribed by the examining board but the briefs set allow students to express themselves as individuals within the subject area. The aim of the study is to provide students with a breadth of experience that they may not cover through personal choice and to broaden their skills base for study at A2 level and beyond. The areas of manufacturing study cover both workshop and industrial processes.

A2 level

- A design problem of your own choice which will include research, the development of a design solution and the manufacture of fully working outcome
- 20th century design
- Modern design and manufacturing systems
- The impact of design and technological activities on the environment

How Will I Be Assessed?

There is still an AS at the end of Year 12. At both AS and A2 level, marks are split between coursework (60%) and examination (40%).

Leading To A Career In?

Design Technology can lead to further studies with possible careers in architecture, graphic design, furniture and product design, textiles, fashion design and engineering.

What Are The Entry Requirements?

5 A*-C. B in a design related subject at GCSE. Students achieving a C, or not having studied a practical subject but who have an interest in manufacturing and have been successful in maths and science at GCSE will require departmental approval.

Why Study Drama and Theatre Studies?

The study of Drama and Theatre Studies is designed to provide a balance across a range of learning activities. We combine the activities of exploring plays, creating theatre, the performing of plays, the analysis of theatre and the critical evaluation of all of these elements. Students completing the course successfully will have a thorough understanding of drama and theatre, highly tuned analytical and creative skills and an ability to communicate effectively with others.

What Does The Course Involve?

In Year 12, we introduce you to the content of plays written for the theatre. You will learn how to analyse plays in a variety of ways so that you become familiar with the way written plays can be interpreted for realisation in performance.

Then you complete a second unit which offers you the chance to demonstrate skills in a performance environment. The knowledge and understanding gained during the study of two plays in Unit 1 can now be applied with a view to delivering a performance to an audience. You can choose to take the role of a performer or theatre designer, or both. The performance material must be taken from a complete and substantial play text.

In Year 13 you study one set play text in detail, and one prescribed historical period of theatrical development. You will explore the set play from the point of view of a director in both an academic and practical way. You will experience and evaluate a live performance of a play from a chosen historical period and compare it with the original staging conditions of the play.

You will also create an original piece of theatre. The knowledge and understanding gained in Year 12 can now be applied to a created production. You will be assessed on both the process of creation and the finished product in the form of a performance to an invited audience.

How Will I Be Assessed?

Exam board: EDEXCEL. There is still an AS at the end of Year 12. 60% externally assessed (exam); 40% internally assessed (coursework).

Leading To A Career In?

Acting or performance

Stage management

Technical design, sound, lighting, costume, set and props

Armed forces

Social care or social setting

Television and media

Teaching

Uniformed services

...Any job that involves working in a team, with people or presenting to a group!



What Are The Entry Requirements?

5 A*-C, plus a C or above at GCSE level Drama (or performing equivalent).

Why Study Economics?

In today's world Economics is all around us which makes it a constantly evolving, exciting subject to learn about. Study of Economics requires a variety of skills such as analysing, interpreting and responding to data, calculating percentages, indexes and analysing and applying this analysis to your arguments. You will investigate a variety of contemporary issues such as globalisation and how people think in an Economic manner.

What Does The Course Involve?

In your study of Economics you will study Micro (the individual and the individual firm) and Macro Economics (the economy as a whole, globalisation, governments and multinationals). To start with you will focus on how markets work and why they may fail, then you will be looking at the UK economy and finishing by looking at the important issue of the labour market, which will include both micro-economic and macro-economic factors.

The course involves investigating four themes:

Theme 1 – markets and market failure: this theme focuses on micro-economic concepts. Students will develop an understanding of the nature of economics, how markets work, market failure, government intervention.

Theme 2 – The UK economy, focusing on performance and policies: this theme focuses on macro-economic concepts. Students will develop an understanding of measures of economic performance, aggregate demand, aggregate supply, national income, economic growth, macro-economic objectives and policy.

Theme 3 – Business behaviour and the labour market: this theme develops the micro-economic concepts introduced in Theme 1 and focuses on business economics. Students will develop an understanding of business growth, business objectives, revenues, costs and profits, market structures, labour market, government intervention.

Theme 4 – Global perspective: this theme develops the macro-economic concepts introduced in Theme 2 and applies these concepts in a global context. Students will develop an understanding of international economics, poverty and inequality, emerging and developing economies, the financial sector; role of the state in the macro-economy.

Leading To A Career In?

Economist, government economist, civil service fast streamer, broker, financial analyst, business analyst, management accountant, financial services, human resources, marketing, operations – any career in business!

How Will I Be Assessed?

Exam Board Edexcel. This is a two year course with no AS at the end of Year 12. Entirely by exams at the end of two years.

What Are The Entry Requirements?

5 A*-C. You also need B in English and Maths

Why Study English Language?

If you want to understand how language is used to control and manipulate us by both the media and people in power, how to take apart a piece of language and be able to work out exactly what makes it tick and produce your own piece of polished prose, radio script or journalism, this is the course for you.

What Does The Course Involve?

Component One 40 %

Language under the microscope

You are expected to be able to identify significant features or patterns in a text and to explore their effects.

Writing about a topical language issue

You will present and explore your ideas and attitudes towards topical language issues through short pieces of original writing.

Comparing and contrasting texts

You will compare a variety of texts, exploring the effects of mode and of language variations, such as comparing spoken and written texts.

Component Two: Dimensions of Linguistic variation 40%

Child Language acquisition

The focus of this section is on children's acquisition of spoken language. The age range to be explored is from 0-7. You will use theoretical studies to analyse a short sample of authentic children's spoken text.

Language in the Media

You will consider relevant theories of language and power, language and gender or language and technology in exploring media texts. You will study how power, gender and technology are represented in a variety of discourses and texts.

Language Change

You will study the ways that the English language has developed and changed over time. You will study a range of historical texts and genres and be able to compare significant features or patterns in texts from different times and explore their effects.

Component Three: Independent language research 20%

Language Investigation

You will undertake an independent investigation on a topic of your own choice. You will choose your own methodologies; select and analyse your own data and draw suitable conclusions from them.

Academic Poster

You will produce a well-researched and effectively organised overview of the learner's own independent investigation in a form that would be suitable for display at an undergraduate conference for English language research.

How Will I Be Assessed?

Exam Board OCR. This is a two year course with no AS at the end of Year 12. 80% exam, 20% coursework.

Leading To A Career In?

A Level English Language can help many career paths including journalism, writing, teaching, politics and the law.

What Are The Entry Requirements?

5 A*-C including a grade B in English Language and English Literature.

Why Study English Literature?

In studying English Literature you will develop interest in and enjoyment of the subject through reading widely, critically and independently across centuries, genre and gender. You will consider how writers – including you – succeed in shaping the responses and opinions of others. In essence, "The study of English Literature trains the brain and frees the imagination; it is about life and living and just where you fit into the world around you."

What Does The Course Involve?

Component One 40 %

You must study one play by Shakespeare. In addition, you are required to study one pre-1900 drama text and one pre-1900 poetry text.

Set Texts Shakespeare:

- *Coriolanus*
- *Hamlet*
- *Measure for Measure*
- *Richard III*
- *The Tempest*
- *Twelfth Night*

Set Texts Pre-1900 drama

- Christopher Marlowe: *Edward II*
- John Webster: *The Duchess of Malfi*
- Oliver Goldsmith: *She Stoops to Conquer*
- Henrik Ibsen: *A Doll's House*
- Oscar Wilde: *An Ideal Husband*.

Set Texts Pre- 1900 Poetry

- Geoffrey Chaucer: *The Merchant's Prologue and Tale*
- John Milton: *Paradise Lost* Books 9 & 10
- Samuel Taylor Coleridge: *Selected Poems*
- Alfred, Lord Tennyson: *Maud*
- Christina Rossetti: *Selected Poems*.

Component Two: Comparative and Contextual study 40%

You choose one topic from the set list below and study at least two whole texts in your chosen topic area.

Set Topics and Core texts

American Literature 1880–1940

- F Scott Fitzgerald: *The Great Gatsby*
- John Steinbeck: *The Grapes of Wrath*

The Gothic

- Angela Carter: *The Bloody Chamber*
- Bram Stoker: *Dracula*

Dystopia

- Margaret Atwood: *The Handmaid's Tale*
- George Orwell: *Nineteen Eighty-Four*

Set Topics and Core texts

Women in Literature

- Jane Austen: *Sense and Sensibility*
- Virginia Woolf: *Mrs Dalloway*

The Immigrant Experience

- Mohsin Hamid: *The Reluctant Fundamentalist*
- Henry Roth: *Call It Sleep*

Component Three: Literature post-1900 20%

You choose and study one poetry text, one drama text and one prose text all written before 1900.

How will I Be Assessed?

Exam Board OCR. This is a two year course with no AS at the end of Year 12. 80% exam, 20% coursework.

Leading To A Career In?

A Level English Literature can lead to many career paths including journalism, writing, teaching, politics and the law.

What Are The Entry Requirements?

5 A*-C including a grade B in English Language and English Literature.

Why study Film Studies?

Studying Film will deepen your understanding, appreciation and enjoyment of the major art form of the last 120 years. We have all been 'cineliterate' since early childhood but few realise what a complex act of decoding we take on when we watch a film. Studying Cinema as a medium, as art and as a social and economic institution, you will engage with a wide range of different kinds of films, developing skills of observation, critical analysis and personal reflection.

What Does the Course Involve?

You will be introduced to the diverse range of film forms and film styles that have developed in different places through the history of cinema. We begin with analysing how film 'works'; how the interaction between spectator and the use of editing, sound and visual storytelling creates meaning. There will be opportunities to put this learning into practice through practical filmmaking.

We will also analyse how the context of filmmaking affects style and ideology through study of Hollywood genre films and British cinema. There will also be a focus on the contemporary differences between the American and British film industries and how audiences interact with their entertainment through issues of social media use, new methods of film distribution and issues of piracy.

With its emphases on visual storytelling and response Film Studies extends areas of experience covered by Literature, Theatre and Art History specifications. With its emphases on depth and diversity it goes much further than Media Studies in providing a foundation in the study of film texts, producers, audiences, messages and critical approaches. With its emphases on the interaction between audiences and film and psychoanalytical approaches to reading Cinema, there are links with the Social Sciences and Business Studies. With its emphases on the context of film production, there are parallels with the study of History.

How Will I Be Assessed?

Exam board: WJEC. There is still an AS at the end of Year 12. AS: 40% coursework (one analytical essay and one piece of creative work) 60% exam (one paper with a choice of one question from each of three sections); A2 is currently 50% coursework, 50% exam.

Leading To A Career In?

Film making, film theory, film criticism and film history
The social sciences
The media
Journalism
The performing arts
Business
Marketing
Creative writing

What Are The Entry Requirements?

5 A*-C.

Why Study French?

A Level French helps you develop confident, effective communication skills in the French language, as well as developing a thorough understanding of the culture of countries and communities where French is spoken. French recently appeared in a list of the projected top 10 vital languages for the next 20 years in the UK. According to British Council research, currently less than 15% of British adults can hold a conversation in French. Make sure you are among this elite minority!

What Does The Course Involve?

This course develops an interest in, and enthusiasm for, language learning and encourages you to consider your study of the language in a broader context. You will begin by looking at themes which resonate in your own life, such as the use of media, popular culture, including cinema, music and fashion, healthy living and lifestyles and also the study of family and relationships in our lives.

You will then move onto the study of the language in a wider global context, investigating issues such as the environment, multicultural societies and contemporary social issues such as poverty and crime. The course requires you to develop your ability to write and speak in French, with accurate grammar and syntax for a range of purposes and to understand written or spoken French in a variety of contexts and genres. Your communication skills will improve, as will your knowledge and understanding of the world around you.

How Will I Be Assessed?

Exam Board AQA. There is still an AS at the end of Year 12. Assessment will be by final exams at the end of each year of study.

Leading To A Career In?

Speaking a language at advanced level is a transferable life skill which adds to your employability repertoire and to your appeal as an employee in all walks of life. Gone are the days when we cited cabin crew, translators, interpreters etc. as a possible career for successful linguists. In today's busy world of business, the value of effective communication in another language will enhance your CV and your skills of communication so that you gain an advantage in the world of work across the board. The world really will be your oyster!

What Are The Entry Requirements?

5 A*-C. B in French.

Why Study Geography?

Geography matters. It matters because it's relevant. Geography's relevance stems from the fact that it can lie at the heart of government policy making, as well as affecting the way we live our everyday lives. It considers some of the most critical issues affecting the planet today, such as population growth, globalisation and environmental degradation. To understand Geography is to understand your world. Geography's strength lies in its breadth. It draws together just about all other subjects and explains the link between them all. It is the link between science and the arts and looks at key issues such as sustainability, interdependence and global citizenship. Universities and employers like Geography, as it provides you with so many useful skills, including analytical, statistical, presentational and research skills, useful in so many disciplines.

What Does The Course Involve?

In Year 12 you will study managing physical environments, such as river environments, coastal environments, cold environments, hot arid environments. You will also study managing human environments, managing urban change, rural change, the energy issue and the growth of tourism.

In Year 13 the course is comprised of global issues, namely environmental issues, earth hazards, ecosystems and climatic hazards, economic issues, population and resources, globalisation and development, and Geographical skills.

An essential part of Geography is studying the environment first hand. In addition to this, you will be required to refer to your own fieldwork. Therefore the department organises a range of fieldwork opportunities to enable you to develop the necessary skills. These trips include a residential trip to North Norfolk to study coastal management and a trip to Shropshire to study rivers. The department also runs a five-day fieldtrip to Iceland focusing on volcanoes, glaciers and sustainable energy and a six-day trip to Beijing, China to study development and globalisation.

How Will I Be Assessed?

Exam Board OCR. There is still an AS at the end of Year 12. All assessment is by examination.

Leading To A Career In?

Cartographer; commercial/residential surveyor; environmental consultant; geographical information systems officer; planning and development surveyor; secondary school teacher; town planner

Careers where a degree in Geography would be useful: international aid/development; logistics and distribution; market researcher; nature conservation officer; tourism officer; transport planner

Geography is a subject that teaches skills which help with many career paths and are highly valued in the job market.

What are the entry requirements?

5 A*-C.

It is not essential that you have studied Geography at GCSE in order to take the A Level, although it does obviously help. Of the minimum of five A-C grades in your GCSEs you need in order to take the course, Geography, Maths and English Language are the most important.

Why Study German?

A level German helps you develop confident, effective communication skills in the German language, as well as developing a thorough understanding of the culture of countries and communities where German is spoken. Many of the current driving forces in the business world today are businesses either owned by German or German-speaking companies. According to British Council research, currently only 5% of British adults can hold a conversation in German. Make sure you are among this elite minority!

What Does The Course Involve?

This course develops an interest in, and enthusiasm for, language learning and encourages you to consider your study of the language in a broader context. You will begin by looking at themes which resonate in your own life, such as the use of media, popular culture, including cinema, music and fashion, healthy living and lifestyles and also the study of family and relationships in our lives.

You will then move onto the study of the language in a wider global context, investigating issues such as the environment, multicultural societies and contemporary social issues such as poverty and crime. The course requires you to develop your ability to write and speak in German, with accurate grammar and syntax for a range of purposes and to understand written or spoken German in a variety of contexts and genres. Your communication skills will improve, as will your knowledge and understanding of the world around you.

How Will I Be Assessed?

Exam Board AQA. There is still an AS at the end of Year 12. Assessment will be by final exams at the end of each year of study.

Leading To A Career In?

Speaking a language at advanced level is a transferable life skill which adds to your employability repertoire and to your appeal as an employee in all walks of life. Gone are the days when we cited cabin crew, translators, interpreters etc. as a possible career for successful linguists. In today's busy world of business, the value of effective communication in another language will enhance your CV and your skills of communication so that you gain an advantage in the world of work across the board. The world really will be your oyster!

What Are The Entry Requirements?

5 A*-C. B in German.

Why Study Government and Politics?

This course will give you valuable insights into the world of political ideas, processes and key institutions. There can be no better time to study Government and Politics due to the rapidity of change in the world. The collapse of communism in Eastern Europe, the aftermath of 9/11, and the growth of the European Union, are all events which have and will continue to touch our lives. A successful student of Politics will leave the course with a developing knowledge of both domestic and international Issues, and will have the skills necessary to make effective contributions to future political debates.

What Does The Course Involve?

AS Government and Politics

Unit One – People, Politics & Participation

Participation and voting behaviour, electoral systems, political parties, pressure groups and protest movements.

Unit Two – Governing Modern Britain

The British constitution, parliament, the core executive & multi-level governance

A2 Government & Politics (Studied in Year 13)

Unit Three – The Government of the USA

The constitutional framework, the legislative branch, the executive branch, the judicial branch.

Unit Four – The Politics of the USA

The US electoral process & direct democracy, political parties, voting behaviour & pressure groups.

You will be expected to keep up to date by watching current events on TV and reading quality newspapers. You are encouraged to incorporate internet research into working habits. Course content is delivered via a range of teaching and learning activities which include, lectures, small group presentations, discussions and debates. Past questions are set for homework every two to three weeks for each teacher.

How Will I Be Assessed?

Exam Board AQA. There is still an AS at the end of Year 12. 100% examination.

Leading To A Career In?

This is an excellent A level for many career pathways and university degrees, in fields such as politics, international relations, law, history, sociology, economics, business...all these will benefit from this course.

What Are The Entry Requirements?

5 A*-C, with C in English.

Why Study Health and Social Care?

If you prefer a subject with less exams and if you enjoy portfolio work and taking charge of your own learning, this may suit you.

This is a vocational course and you will get the opportunity to visit care settings to gather information for your portfolio work. You will be expected to keep up to date with current health and social care related news issues from reading and listening to the news. This is both a practical and academic course and requires your enthusiasm and commitment.

In a work-related context, you will develop skills that will enable you to make an effective contribution to the care sector, including research, evaluation and problem-solving skills. You may apply your learning to your choice of contexts: health, children's services, care of older people or individuals with specific needs.

Ideal for those who enjoy creating project-style work and investigating real situations, this course will help develop your understanding of the diverse and complex nature of the health and social care sector.

What Does The Course Involve?

| Unit | Title | Level | Exam/ Portfolio |
|------|--------------------------------------|-------|-----------------|
| 1 | Human Growth and Development | AS | Exam |
| 2 | Communication and Values | AS | Portfolio |
| 3 | Positive Care Environments | AS | Portfolio |
| 4 | Social Aspects and Lifestyle Choices | AS | Exam |
| 5 | Activities for Health and Well-Being | AS | Portfolio |
| 6 | Public Health | AS | Portfolio |
| 7 | Meeting Individual Needs | A2 | Exam |
| 8 | Promoting Health and Well-Being | A2 | Portfolio |
| 9 | Investigating Disease | A2 | Portfolio |
| 10 | Using and Understanding Research | A2 | Portfolio |
| 11 | Social Issues and Welfare Needs | A2 | Portfolio |
| 12 | Understanding Human Behaviour | A2 | Exam |

How Will I be Assessed?

Exam Board Edexcel. There is still an AS at the end of Year 12. 75% coursework, 25% exams.

Leading To A Career In?

If you want a career in the caring professions then this is the subject for you; whether it is being a paramedic, nurse, midwife, child care, mental nurse, any profession in these areas or even if you are thinking of teaching, this course will prepare you.

What Are The Entry Requirements?

AS HSC 3 unit single award and 6 unit double award: 5 A*-C. C in science is preferable.

Why Study History?

History is for you if you have an interest in the world around you, the society you live in, and how it has developed, if you like learning about people, how they interact and what motivates them, and about different countries, societies and cultures. It is for you if you have an enquiring mind and the ability to weigh up evidence or arguments, enjoy discussion, debate and argument, like to think for yourself and develop your own views, and enjoy research and analysing material to check for bias and propaganda.

What Does The Course Involve?

You can study one of two courses at A level, Pathway A and Pathway B. Both pathways are of equal level of challenge; they are designed to give you a choice about what you study and reflect the broad range of expertise that our large and popular department has. They are examined in exactly the same way so you will need to make the decision based on what interests you.

| Unit | Pathway A "Making and breaking of great powers" | Pathway B "Dynasty, Democracy and Dictatorship" | Key Information |
|----------------------------------|---|--|--|
| Paper 1 Breadth Study | <ul style="list-style-type: none">USA: The making of a super power: USA, 1865-1975 | <ul style="list-style-type: none">England The Tudors: England, 1485- 1603 | The study of significant historical developments over a period of around 100 years and associated interpretations. Examined Unit |
| Paper 2: Depth Studies | <ul style="list-style-type: none">England The English Revolution: 1625-1660 | <ul style="list-style-type: none">Germany Democracy and Nazism: Germany, 1918- 1945 | The study in depth of a period of major historical change or development and associated primary evidence. Examined unit |
| Coursework | <ul style="list-style-type: none">Russia: The making of modern Russia, 1856-1964 | | In this unit you will carry out an historical enquiry on Russian History. |

How Will I Be Assessed?

Exam Board: AQA. This is a two year course with no AS at the end of Year 12. The course consists of three units – two are examined at the end of Year 13 and a coursework unit.

Leading To A Career In?

The skills you will obtain through studying History will be useful in a number of careers, either directly related to History (e.g. working in galleries, museums, heritage sites, record offices and archives and teaching), or in areas such as journalism, law, libraries, national and local government and the civil service.

What Are The Entry Requirements?

B in History GCSE, if taken. Minimum C in English, and we would prefer you to have a grade B.

Why Study ICT?

The IT sector, with its array of existing and constantly evolving technologies, presents a stimulating and challenging working environment. The industry offers a wide range of career opportunities, including networking, software development, project management, programming and telematics. The GCE in Applied ICT has been designed to provide a broad educational basis for further education or for moving into employment within the ICT sector. This is achieved by ensuring that learners develop the general skills, knowledge and understanding needed within the sector. The study of IT allows you to pick up specialist skills, ideal for moving into the IT industry and providing skills necessary and relevant for any industry.

What Does The Course Involve?

Each unit also has either an end-user or a practitioner focus. Practitioner-focused units require you to demonstrate your ability to work with clients and end-users and produce products or services for someone else to use. In contrast, user-focused units assume that you are using ICT for your own purposes and are not necessarily using ICT to produce something for someone else to use.

The units are:

- The Information Age
- The Digital Economy
- The Knowledge Worker
- Using Database Software
- Managing ICT Projects
- Using Multimedia Software



How Will I be Assessed?

Exam board: Edexcel. There is still an AS at the end of Year 12.

- AS consists of two units coursework and one 2 ½ hour practical exam (all evenly weighted)
- A2 consists of two units coursework and one 10 hour practical exam (all evenly weighted)

Leading To A Career In?

This qualification supports progression into further education, training or employment. If successful there are a wide variety of potential careers that you can explore, within sectors such as the growing computer games industry, product development, technical support, technical sales, telecommunications and hardware engineering. Jobs that are commonly taken after completion of the qualification are: systems analyst, computer service technician and computer operator. Appropriate further education might be a Higher National in Computing, a Foundation Degree in Computing, a degree in computing, IT or related fields or entry into employment.

What Are The Entry Requirements?

5 A*-C

A Level Computer Science

We are currently looking into the possibility of running an A Level Computer Science Qualification as an alternative to Applied ICT. Computer Science has more of a focus on problem solving using computers and more of an emphasis on computer programming and algorithms. Computer Science has less emphasis on ICT and includes more on the mathematical skills used to express computational laws and processes.

Why Study Maths?

It is not just about getting 'the answer'! It is about being able to use 'mathematical' skills to answer questions about a particular situation, to understand the way you did it, to be able to explain the method to someone else and convince them you are right. Put more simply it is about learning to think.

What Does The Course Involve?

You will be expected to do a lot of written work, presented so that others can understand clearly what you are trying to do. You will need to be able to think clearly, remember methods you have met and understood and be able to apply them to new situations. You will learn the meaning of Mathematical terms and the mathematical meanings of some things you thought you knew! You will be expected to be able to talk about your work, with your friends and with your teacher and to do practical things like measuring and making models. You will need to understand about numbers, arithmetic, estimation, and patterns, be able to use a calculator sensibly and work things out in your head when necessary.

Beside the mathematical aspect of the course we shall be assessing your progress in two personal skills relating to your work:

Communication – As outlined above it is vital to be able to communicate your ideas and thoughts. We shall be commenting upon:

- a) The clarity of your written work: is it easy for someone else to follow your method? Have you explained clearly the steps you have taken in answering questions? Have you explained what is meant by any unusual symbols you may have used?
- b) Your ability to talk about what you are doing: can you explain in words what your work is about to friends? Your teacher?
- c) Your willingness to ask questions either in a class lesson or individually with your teacher. Do you ask if you don't understand or do you just hope the problem will go away?

Independence and Organisation - Can you organise your own work? Produce homework and assignments on time without being chased?

How Will I Be Assessed?

Exam Board OCR. There is still an AS at the end of Year 12. The A Level course is divided into 6 modules which all have equal weighting – 3 for AS (Core 1, Core 2 and Statistics 1) and a further 3 for A2 (Core 3, Core 4 and Decision 1). Core 3 contains a coursework element that counts for 20% of that module.

Leading To A Career In?

You could take this course to complement other advanced level courses or to prepare for the A2 part of an Advanced GCE in Mathematics, which could lead onto higher education in areas of Mathematics, related areas such as Engineering, Economics, Physics or more general higher education courses. With further training, you could go into a job related to Mathematics such as an Accountant, Engineer, Financial Adviser or Teacher. You could also go straight into a job as the A Level is a recognised qualification that will help you develop the skills, understanding and knowledge that many employers across lots of industries are looking for.

What Are The Entry Requirements?

The minimum requirement for this course is a B in GCSE Maths and a GCSE point score of 43.

Why Study Maths?

It is not just about getting 'the answer'! It is about being able to use 'mathematical' skills to answer questions about a particular situation, to understand the way you did it, to be able to explain the method to someone else and convince them you are right. Put more simply it is about learning to think.

What Does The Course Involve?

You will be expected to do a lot of written work, presented so that others can understand clearly what you are trying to do. You will need to be able to think clearly, remember methods you have met and understood and be able to apply them to new situations. You will learn the meaning of Mathematical terms and the mathematical meanings of some things you thought you knew! You will be expected to be able to talk about your work, with your friends and with your teacher and to do practical things like measuring and making models. You will need to understand about numbers, arithmetic, estimation, and patterns, be able to use a calculator sensibly and work things out in your head when necessary.

Beside the mathematical aspect of the course we shall be assessing your progress in two personal skills relating to your work:

Communication – As outlined above it is vital to be able to communicate your ideas and thoughts. We shall be commenting upon:

- a) The clarity of your written work: is it easy for someone else to follow your method? Have you explained clearly the steps you have taken in answering questions? Have you explained what is meant by any unusual symbols you may have used?
- b) Your ability to talk about what you are doing: can you explain in words what your work is about to friends? Your teacher?
- c) Your willingness to ask questions either in a class lesson or individually with your teacher. Do you ask if you don't understand or do you just hope the problem will go away?

Independence and Organisation - Can you organise your own work? Produce homework and assignments on time without being chased?



How Will I Be Assessed?

Exam Board OCR. There is still an AS at the end of Year 12. The A Level course is divided into 6 modules which all have equal weighting – 3 for AS (Core 1, Core 2 and Mechanics 1) and a further 3 for A2 (Core 3, Core 4 and Decision 1). Core 3 contains a coursework element that counts for 20% of that module.

Leading To A Career In?

You could take this course to complement other advanced level courses or to prepare for the A2 part of an Advanced GCE in Mathematics, which could lead onto higher education in areas of Mathematics, related areas such as Engineering, Economics, Physics or more general higher education courses. With further training, you could go into a job related to Mathematics such as an Accountant, Engineer, Financial Adviser or Teacher. You could also go straight into a job as the A Level is a recognised qualification that will help you develop the skills, understanding and knowledge that many employers across lots of industries are looking for.

What Are The Entry Requirements?

The minimum requirement for this course is a B in GCSE Maths and a GCSE point score of 43.

Why Study Maths?

It is not just about getting 'the answer'! It is about being able to use 'mathematical' skills to answer questions about a particular situation, to understand the way you did it, to be able to explain the method to someone else and convince them you are right. Put more simply it is about learning to think.

What Does The Course Involve?

You will be expected to do a lot of written work, presented so that others can understand clearly what you are trying to do. You will need to be able to think clearly, remember methods you have met and understood and be able to apply them to new situations. You will learn the meaning of Mathematical terms and the mathematical meanings of some things you thought you knew! You will be expected to be able to talk about your work, with your friends and with your teacher and to do practical things like measuring and making models. You will need to understand about numbers, arithmetic, estimation, and patterns, be able to use a calculator sensibly and work things out in your head when necessary.

Beside the mathematical aspect of the course we shall be assessing your progress in two personal skills relating to your work:

Communication - As outlined above it is vital to be able to communicate your ideas and thoughts. We shall be commenting upon:

- a) The clarity of your written work: is it easy for someone else to follow your method? Have you explained clearly the steps you have taken in answering questions? Have you explained what is meant by any unusual symbols you may have used?
- b) Your ability to talk about what you are doing: can you explain in words what your work is about to friends? Your teacher?
- c) Your willingness to ask questions either in a class lesson or individually with your teacher. Do you ask if you don't understand or do you just hope the problem will go away?

Independence and Organisation - Can you organise your own work? Produce homework and assignments on time without being chased?

How Will I Be Assessed?

There is still an AS at the end of Year 12. The OCR MEI A Level course is divided into 12 modules which all have equal weighting – 6 for AS (Core 1, Core 2, Core 3, Core 4, Statistics 1 and Statistics 2) and a further 6 for A2 (Further Pure 1, Further Pure 2, Differential Equations, Mechanics 1, Mechanics 2 and Decision 1). Core 3 and Differential equations both contain a coursework element that counts for 20% of each respective module.

Leading To A Career In?

You could take this course to complement an Advanced GCE in Mathematics or as part of the A2 part of an Advanced GCE in Further Mathematics, which will support entry to higher education in areas of Mathematics, Electronics, Economics, Physics or more general higher education courses. With further training, you could go into a job related to Mathematics such as an Accountant, Engineer or Teacher. You could also go straight into a job as the A Level is a recognised qualification that will help you develop the skills, understanding and knowledge that many employers across lots of industries are looking for, especially in the economic and engineering sectors.

What Are The Entry Requirements?

The minimum requirement for this course is an A or A* in GCSE Maths and GCSE points score of 52.

Why Study Music?

This course is designed to help you develop your skills as a performer, composer and listener. You study the theory and history of music, will have instrumental or vocal lessons, and perform as both a soloist and as part of ensembles. You will also enjoy seeing a range of live music.

What Does The Course Involve?

AS

- Performing Minimum Grade 5 level
- One original Composition
- Listening and Understanding – which involves knowledge and analysis of set works

A2

- Performing Minimum Grade 6 level
- Develop compositional techniques
- Develop listening and analysing



You will receive 9 hours lesson time during the fortnight, additional listening, homework on knowledge and analysis of set works, homework on compositional techniques and composition, developing performing skills – practice lessons, concerts, research.

How Will I Be Assessed?

There is still an AS at the end of Year 12. The performing component is assessed by your teachers in school. The composing elements are externally assessed. There is also one written examination each year.

Leading To A Career In?

A level Music is widely accepted as a general qualification for entry into any type of business or organisation or for entry into a wide range of degree courses in other subjects. You could take this course with other advanced level courses to prepare for higher education in Music related courses or more general higher education courses. With further training, you could go into a job related to Music such as a Music Composer, Musician, Sound Technician or you may wish to use your music ability for recreational purposes. The course is designed to provide you with access to a range of music related employment and will also develop the skills, understanding and knowledge that many employers seek.

What Are The Entry Requirements?

5 A*-C. B in Music. Grade 5 Theory and Grade 5 at an instrument recommended.

Why Study Music Technology?

You will develop vital skills for any career in the field, such as those to do with ICT, practical, aural, creative, research, knowledge and understanding.

You could take this course with other advanced level courses to prepare for higher education in Music related courses or more general higher education courses. With further training, you could go into a job related to Music such as a Music Composer, Musician, Sound Technician or you may wish to use your music ability for recreational purposes. The course is designed to provide you with access to a range of music related employment and will also develop the skills, understanding and knowledge that many employers across lots of other industries are looking for.

What Does The Course Involve?

AS

- Sequencing and recording
- Arranging
- Listening, based on popular music and jazz

A2

- Sequencing, recording and producing
- Composing using technology
- Listening and analysing- demonstrating ability to control and interpret midi data and a study of film music



You will have 4 hours lesson time per week, 2 hours a week in addition on coursework, additional listening, research into development of Music Technology, Classical Music and Popular Music and Jazz

How Will I Be Assessed?

There is still an AS at the end of Year 12. Exam and coursework.

Leading To A Career In?

Sound recording, leisure industry, composer, music industry, DJ. Careers include: arts, administration, instrument making/repair/restoration, military band, journalism, librarian, music therapy, teacher, lecturer, performer, public relations, tour manager.

What Are The Entry Requirements?

5 A*-C, including English and Maths, grade C in GCSE Music or equivalent. Understanding of music theory to at least grade 3 and ability on an instrument are strongly desirable. Ability to play the piano/keyboard would be advantageous.

Why Study PE?

Sport & fitness is a huge industry... and you can be part of it. If you're keen on sport you can make a healthy living from your passion. Whether that's working for a football club, as a personal trainer at the local gym, or training to be a physiotherapist, there are lots of opportunities. From professional sport through to amateur teams and individuals who just want to get in shape, sport and fitness is a fast-growing business.

Best of all, you could be in a career doing something that you love.

What Does The Course Involve?

In the first year there are two main study topics.

The first of these covers the beneficial effects of a healthy lifestyle and includes subjects like the physiological effects of exercise and how people acquire sports skills. In the second study topic you'll learn how to analyse and evaluate an athlete's performance, how to improve performance, and the factors affecting gaining new skills.

In the second year you'll have two main study topics again. The first continues with the theme of optimising the performance of an athlete. This includes how physiology can improve performance for elite athletes, as well as studying the important topics within sport today. The second study topic looks at performance in competitive situations. This includes the observation and analysis of weaknesses, along with ways of correcting any errors the athlete is making

How Will I Be Assessed?

Exam Board AQA. There is still an AS at the end of Year 12. 60% exams, 40% coursework.

Leading To A Career In?

The subjects you learn about will be invaluable at a personal level and will help you to be better at sport, no matter what your standard.

This A Level also opens up a whole number of career options.

- Sport Scientist
- Physiotherapist
- Working for a national governing body
- Psychologist
- Technology in Sport
- Sport and the Law
- PE Teacher
- Nutritionist
- Sports Journalism

What Are The Entry Requirements?

5A*-C

C in Science and C in PE are preferable but not required



BTEC Level 3 in Sport

We are also considering introducing a Level 3 vocational course in Sport, which would be the equivalent of an A level but would be entirely coursework based. Please do contact our PE department for information about this.

Why Study Philosophy?

A Level Philosophy provides students with a broad introduction to the study of Philosophy.

This course is designed to:

- develop a range of transferable skills which can be applied far beyond the study of Philosophy
- integrate themes and texts to allow teachers to plan the most suitable modules for the textual problems or the most suitable texts given their interest in other modules
- help students gain a thorough grounding in key philosophical concepts, themes, texts and techniques
- enable students to develop the ability to reason, form their own judgements, express themselves coherently and contribute to the process of debate
- show students how to consider philosophical problems through the study of a key text.

What Does The Course Involve?

Units of study:

AS – Epistemology and Philosophy of Religion

A2 – Philosophy of mind and Moral Philosophy

How Will I be Assessed?

Exam board AQA. There is still an AS at the end of Year 12. A Level Philosophy is assessed by written exam only, currently at the end of Year 12 (AS) and end of Year 13 (A2).

Leading To A Career In?

Many of our students go onto university to study Philosophy, often in combination with other disciplines. Popular combinations include: Philosophy/History; Philosophy/English; Philosophy/Law; Philosophy/Maths and even Philosophy/Biology.

Philosophy is a valued qualification in such careers as: politics, research, journalism, law, charities, social services, education, civil service, publishing, marketing, and advertising.

What Are The Entry Requirements?

5 A*-C. B in English is preferred/advised, but not compulsory, as the course involves studying classic Philosophy texts as primary sources.



Why Study Physics?

Are you interested in the physics topics in your science studies at GCSE? Are you good at Maths? Do you enjoy problem solving? Would you like to know more about fundamental ideas such as quantum mechanics, cosmology and nuclear physics? If the answer to these questions is yes, then A Level Physics might be for you.

What Does The Course Involve?

Module 1 – Development of practical skills in Physics: skills of planning, implementing, analysis and evaluation

Module 2 – Foundations of Physics: physical quantities and units; scalars and vectors; measurements

Module 3 – Forces and motion: motion; forces in action; work, energy and power; materials; Newton's laws of motion and momentum

Module 4 – Electrons, waves and photons: charge and current; energy, power and resistance; electrical circuits; waves; quantum physics

Module 5 – Newtonian world and astrophysics: thermal Physics; circular motion; oscillations; gravitational fields; astrophysics

Module 6 – Particles and medical Physics: capacitors; electric fields; electromagnetism; nuclear and particle physics; medical imaging.

How Will I Be Assessed?

Exam Board OCR. This is a two year course with no AS at the end of Year 12. All examinations are taken in the summer of Year 13. For the full A Level course there are three papers plus a practical endorsement.

Leading To A Career In?

A Physics qualification is essential for many future careers in science and engineering. It is also classed as a "facilitating" A level by Russell Group Universities as there are many university courses that require A Level physics. Physics can also help you make progress in other fields that value the demanding skills developed through Physics. Many architects, accountants, bankers and lawyers have benefited from studying Physics at A level. Physics is even relevant if you are planning to study music, as it helps you to understand how sound is produced and transmitted.

What are The Entry Requirements?

The minimum requirement is an average point score of 46, B in Maths, C in English and:

- For Triple Science Students, A in Physics, Bs in Biology, Chemistry.
- For Double Science Students, A in Additional Science, B in Core Science.

Why Study Psychology?

If you are interested in what makes you and other people 'tick' then this is the course for you! It will help you understand so much about individuals and will contribute towards your lifelong learning.

What Does The Course Involve?

You will learn about the different branches within Psychology; cognitive, developmental, social, behavioural and psychodynamic, and their different approaches to what makes us think and behave differently to one another. You will study how Psychology, as a science, investigates human memory, attachment, conformity and stress as well as looking at individual differences and abnormality.

Paper 1: *Introductory Topics in Psychology: Social Influence, Memory and Attachment, Psychopathology.*

This is a 2 hour exam consisting of 4 multiple choice questions worth 24 marks each. 96 marks in total and 33.3% of the A level

Paper 2: *Psychology in Context: Approaches in Psychology, Bio-Psychology, Research Methods.*

This is a 2 hour exam consisting of 2 multiple choice questions worth 24 marks each and one worth 48 marks respectively, 96 marks in total and 33.3% of the A level.

Paper 3: *Issues and Options in Psychology: Issues and Debates, Gender, Stress and Forensic Psychology.*

How Will I Be Assessed?

Exam Board AQA. This is a two year course with no AS at the end of Year 12. 100% examination after two years.

Leading To A Career In?

Any degree and/or career that involves people, such as Sociology, Business Studies, Drama, as well as degrees in Psychology leading to Forensic, Sport, Educational or Clinical Psychology amongst many other fields.

What Are The Entry Requirements?

5 A*-C, of which you must have a B in at least one science and preferably B in Maths and English.

Why Study Sociology?

Sociology is the study of people in social groups. It attempts to describe and explain human behaviour in a variety of situations. It is a common mistake to think of Sociology as a soft option. While most people find it interesting, stimulating and enjoyable, it also involves reasoned and disciplined thinking and the use of abstract and difficult concepts. Sociology is a living subject dealing with problems that face modern society and challenges many of the common sense notions that people may have concerning issues such as gender, ethnicity, sexuality and class.

What Does The Course Involve?

Students should develop the ability to understand and use sociological concepts concerning theories and methods as well as those concerned with understanding social life in general.

They should be able to interpret and evaluate sociological material in a variety of forms – written, graphical etc.

They should learn to present explanations, ideas and arguments in a coherent and logical form and students will be offered the chance to gain a key skills certificate for communications as part of the Sociology programme. Sociology is not the theoretical preparation for social work. It is a subject that will develop the individual's ability to argue, think and present a balanced critical argument. As an academic subject is an ideal preparation for university entrance as well as careers such as teaching, human resource management, business, nursing or any occupation that is people orientated.

Paper 1: *Education with Theory and Methods.*

Paper 2: *Topics in Sociology:* families and households OR Health, then Beliefs in Society OR the Media.

Paper 3: Crime and Deviance with Theory and Methods.

How Will I Be Assessed?

Exam Board AQA. This is a two year course with no AS at the end of Year 12. 100% examination after two years.

Leading To A Career In?

Sociology can lead to a range of further studies and possible careers including law, police work, journalism, teaching, medical professions, human resources, social work, management, the civil service and probation work.

What Are The Entry Requirements?

5 A*-C with C in maths and preferably B in English.

Why Study Spanish?

A Level Spanish helps you develop confident, effective communication skills in the Spanish language, as well as developing a thorough understanding of the culture of countries and communities where Spanish is spoken. Spanish recently appeared in a list of the projected top 10 vital languages for the next 20 years in the UK. According to recent British Council research, currently only 4% of British adults can hold a conversation in Spanish. Make sure you are among this elite minority!

What Does The Course Involve?

This course develops an interest in, and enthusiasm for, language learning and encourages you to consider your study of the language in a broader context. You will begin by looking at themes which resonate in your own life, such as the use of media, popular culture, including cinema, music and fashion, healthy living and lifestyles and also the study of family and relationships in our lives.

You will then move onto the study of the language in a wider global context, investigating issues such as the environment, multicultural societies and contemporary social issues such as poverty and crime.

The course requires you to develop your ability to write and speak in Spanish, with accurate grammar and syntax for a range of purposes and to understand written or spoken Spanish in a variety of contexts and genres. Your communication skills will improve, as will your knowledge and understanding of the world around you.

How Will I Be Assessed?

Exam Board AQA. There is still an AS at the end of Year 12. Assessment will be by final exams at the end of each year of study.

Leading To A Career In?

Speaking a language at advanced level is a transferable life skill which adds to your employability repertoire and to your appeal as an employee in all walks of life. Gone are the days when we cited cabin crew, translators, interpreters etc. as a possible career for successful linguists. In today's busy world of business, the value of effective communication in another language will enhance your CV and your skills of communication so that you gain an advantage in the world of work across the board. The world really will be your oyster!

What Are The Entry Requirements?

5 A*-C. B in Spanish.