



Hinchingsbrooke School

Inspiring excellence
Fulfilling potential

Sixth Form Prospectus for 2021 entry



CONTENTS

INTRODUCTION	3
CHOOSING YOUR SUBJECTS	4
ENRICHMENT	5
STUDENT VOICE AND STUDENT LEADERSHIP	6
SUPPORT	7
TRANSITION AND INDUCTION	8
PROGRESSION	9
RESOURCES AND FACILITIES	10
CURRICULUM	11
KEY SIXTH FORM AND DEPARTMENTAL CONTACTS	12
COURSES FROM 2020	13-15
INDIVIDUAL SUBJECT PAGES	16-54

INTRODUCTION

We are delighted that you are considering Hinchingsbrooke for your post-16 education.

You will see from the Open Evening Website that we are an ambitious Sixth Form, benefitting from outstanding facilities and a unique setting. We expect everyone who studies and works here to strive for excellence in everything they do. This high standard creates a buzzing sixth form environment where our students are able to flourish and grow their confidence, so that they are ready to take their place in the world.

We pride ourselves in offering high quality teaching and learning in a wide range of subjects. We offer all of the traditional A level subjects you would expect from a large Sixth Form, but our offer also includes subjects which are not available at other local institutions. For example, you can study French, German and Spanish at A level, as well as Computer Science, Music, Music Technology, Drama and Dance.

Your lessons will be fast paced and challenging, delivered by teachers who enthuse about their subjects and who benefit from first class facilities; we have Performing Arts Centre, Music technology suite and cutting-edge IT facilities both in the House and across the school. Aside from your subject choices you also have the opportunity to enhance your wider skills through our extensive enrichment programme, where you can hone your skills in debating, sport, performing arts, politics and much more. It is important to us that our Sixth Formers are busy and feel part of a community; not only will this enhance an application to higher education or employment, it also builds esteem and improves well-being.

Our standard of excellence extends to the support we provide to all of our Sixth Formers. Everyone will get a specialist Sixth Form tutor, whose primary role is to oversee your progress and wellbeing, and to help you move onto university or an apprenticeship. This team of tutors is led by a Head of Year and a well-being specialist. For your guidance we also have a specialised Oxbridge/Russel Group mentor and a Careers Advisor. Coupled with your subject specialist, this network of professionals will ensure that you will be happy, safe and successful whilst you are with us.

We are living in challenging times but you can be confident that our Sixth Form will be a great place for you to complete your final years of education. The following pages provide some further information about the Sixth Form experience and the application process, as well as the subjects that we offer. We very much look forward to receiving your application so that you can begin your journey with us.

Mrs Rix

Director of Sixth Form

Hinchingsbrooke School

SIXTH FORM APPLICATION TIMELINE FOR ENTRY 2021

Remote Open Evening- 12th November 2020

Applications open on mychoice 16- 13th November 2020

Applications close – 7th December 2020

Conditional offers made- 12th February 2020

GCSE results day – 26th August 2020

Guidance interviews – 26th and 27th August 2020

CHOOSING YOUR SUBJECTS

When you are choosing your courses, it is important that you consider subjects that interest you and which you enjoy, as these are likely to be the ones in which you will do best. However, you should also consider which subjects relate to your future aspirations, and be mindful of the entry criteria for the university courses you may wish to study beyond school.

Some top universities used to regard a select group of 'A' Levels as what they used to call 'facilitating' subjects, and for high ability students the view until recently was that students should study at least two of these for a strong application to a top university. Officially, at least, facilitating subjects are no longer recognised in the same way as a distinct category, in part because 'A' Levels have been reformed in recent years. However, it remains the case that some courses have more credibility with the very top universities, and this is one area to be mindful of for some students as you make your choices. On the other hand, many other universities accept all valid Level 3 courses, and are equally interested in what you will offer as a person. Another thing to bear in mind is that several of our courses will be in subject areas which you have never studied before, and you should research these carefully before you make your final choices.

To help you decide which courses and subjects to take, it may be helpful to talk over your options with your family and friends, your teachers or tutor. We offer our options through a number of different 'pathways' in order to accommodate the varying needs of our students (see the Pathways diagram on page 14). This structure is 'descriptive' rather than 'prescriptive', by which we mean we use it for guidance, rather than insisting students follow it. If a student is qualified



for a subject, and the department sign them off, they can do the course.

If, at any time, you would like further information about selecting subjects or subject combinations, please do not hesitate to get in touch with the Sixth Form Team (upperschool@hinchbk.cambs.sch.uk)

“Coming from another school, I have really liked the way the lessons are varied, and structured in a way to continually engage my interest” (Annie, Year 13).

ENRICHMENT



In year 12, **Enrichment** happens on a Wednesday afternoon and is your opportunity to participate in a range of extra and super-curricular activities. Every half term you will undertake a different activity; our current offer includes Financial Life Skills, Debating, online courses as well as a choice of sporting activities such as badminton, football and yoga. We also encourage students to volunteer in the school and wider communities as part of their Enrichment programme. It is our aim next year that students will also complete a term of weekly work experience placements in this lesson time.

The enrichment provision feeds directly into the **Developing Character Diploma** which all students are required to complete during Year 12. The aim of this Diploma is to help you develop and demonstrate your resilience, reflectiveness, humanity, curiosity and creativity, through not just, participation in Enrichment but also mentoring, community endeavours and charity events. These experiences will provide you with a diverse set of skills and attributes which will allow you to

develop into well rounded individuals who are successful in whatever pathway they choose.

Futures Lectures are another important facet to our Enrichment provision, these are one hour lectures in which universities and employers come into to discuss their courses and apprenticeships to targeted groups of students. The current programme consists of over 15 lectures ranging from Medicine to Events Management, Music Production to the Ministry of Defence. Access to such a diverse range of speakers allows students to consider careers they had never considered.



The **House system** continues to play a large role in Sixth Form life with Year 12 students being offered the opportunity to become **House Ambassadors** to support and promote their House in Inter-House competitions with Year 13 students taking on the role of **House Captains** who lead and inspire their House teams as well as acting as a House representative on the School Council alongside our **Head Students**.

Here in the Sixth Form, our core aim is that all students should be happy, safe and successful and we hope that the programmes and opportunities we offer will provide you with not only the currency but also the character and culture to do so.

“There is a huge variety of enrichment opportunity available; and, anyway, you can create any club or society you want, as I did, and the Sixth Form helps and supports you” (Joanna, Year 13).

SUPPORT

There is a wide range of support available for each student in the Sixth Form to ensure that you are happy, safe and successful.

Your **Sixth Form Tutor** has the primary role in and responsibility for overseeing your academic and personal progress during your time in the Sixth Form. They are also the first port of call for parents who wish to share information about their child or raise a concern about their progress.

As well as morning registration slots, your tutor will meet with you regularly to support and guide you from your enrolment and induction at the beginning of Year 12, to your application for employment or to university, as you consider what to do after Year 13.

Your **subject teachers** will all be experts in their respective fields, sharing their knowledge with you through innovative and inspiring lessons. You will be encouraged to discover things for yourself and ask questions to deepen your learning. Subject teachers will stretch and challenge you, and you are expected to work hard in return. Our teaching staff will go that extra mile to support you outside of your lessons, meeting with you in study periods, at lunchtimes and after school to reinforce your learning.

We timetable all Year 12 students for registered periods of **Private Study**, which are supervised sessions in which you can build on the work done in class.



Whilst academic and pastoral guidance is primarily provided by tutors, there is more specialist and personalised support available through Student Services.

We have a **Student Support Officer** in the Sixth Form who works with the Inclusion team, the **Director of SEND**, and the **school's Counsellor** and a **School Nurse**, to co-ordinate interventions wherever needed. Tutors and the Sixth Form team work with all stakeholders to engage additional external support if necessary. Everyone who works with young people has been aware of the alarming increase in recent years regarding concerns about mental health and wellbeing. We have trained our staff and tutors accordingly, and

are fully committed to providing the most caring and high quality support of which we are able.

Regarding SEN and Disability arrangements, fuller details of the school's policies on Safeguarding and Child Protection, Behaviour and Attendance, SEND, Equality, Anti Bullying, plus Supporting Children at School with Medical Conditions are available via the School Policies link on the school website.

There is a sixth form bursary, information about which you will find on the Sixth Form pages of our school website. Please do get in touch with upperschool@hinchbk.cambs.sch.uk if you would like to discuss further.

*"Although it's a big step up the teaching support is excellent. They are always happy to help"
(Michael, Year 12).*

"The teachers are so helpful and supportive. They will give you excellent support – all you have to do is ask" (Evie, Year 12).



It's exciting for us to see the students who have been a part of the school since Year 7 progress through Year 11 and join us here in the Sixth Form. This brings a tremendous sense of family and continuity to the school, which is furthered when those students then feed back into the life of the Lower and Middle School by leading, volunteering and supporting in various ways.

However, whilst the majority of the approximately 420 students in our Sixth Form is made up of those who have progressed from Hinchingsbrooke School, around 25% are from other schools. We make a special effort to give our external students a warm welcome and take pride in the fact that they are often prepared to travel to reach us. In no time they are fully integrated as Hinchingsbrooke Sixth Form students, thus bringing a freshness and vitality to our community.

We have a structured induction period in which we create opportunities for you to assess your learning needs in your chosen subjects. It also provides a chance to settle into the new environment of the Sixth Form and adjust to the expectations and freedoms. As part of induction we organise two transition days at the end of Year 11, after your GCSEs. One day has more of a social focus and the other is more subject based. Both are important and helpful in making the transition to our Sixth Form as smooth as possible.

Our aim is to develop our students as independent learners, but we recognise that for many of you this needs to be a managed process. To facilitate this, we give every Year 12 student eight lessons of registered Independent Study, when they are supervised and monitored on their work.

For students who have an average GCSE points score of 6 or above, we recommend you take the **Extended Project** to provide greater breadth in your learning. This has the value in terms of UCAS points of half an 'A' Level and is a **research project** which provides excellent preparation for you for higher education or for employment. It is designed to foster independence, resilience and maturity as a learner, and is taught in a university style through seminars and supervisions. Whilst we generally expect and encourage students to do dissertations or investigations, you can pursue any topic of your choosing, varying from designing a computer game or a ball gown, to researching the advantages of wind farms, exploring why criminals commit the crimes they do, or writing the opening of (or all of) your first novel. Alternatively, students who are taking courses with a mathematical content, but not Maths, should take **Core Maths** as a fourth 'A' Level for one year. This course provides the mathematical skills needed to support their full A-Level courses. It is an ideal course to take with Economics, Sciences, Geography or Social Sciences.

"You have more independence and greater responsibility, so embrace it" (Justin, Year 13).

PROGRESSION

Our experienced tutors will give you all the help and support you need to make decisions about the next steps after your time in the Sixth Form here. We offer structured tutorial careers sessions and bring in a considerable range of outside speakers to help you to explore multiple possibilities regarding university, gap years, employment, apprenticeships or training.

In March of Year 12 we have a post-18 Options Conference when a range of providers come into school to offer sessions on potential choices available, whether at university, or in the workplace, or workplace learning options such as degree apprenticeships.

We have an in-depth **Oxbridge programme**, and what we call the '**Competitive Applicants Group**', for those students who wish to apply for a Russell Group or top 30 university. We also offer a bespoke activities and support for those not going to university, a careers interview for every Year 13 student. There is a Careers Hub through which apprenticeship and workplace opportunities are regularly promoted to students. Our tutorial programme covers all aspects of apprenticeship and university applications.



“I had really superb support in finishing my UCAS application” (Danny, Year 13).

“Teachers, particularly tutors, give you all the help you need with cvs and apprenticeship applications, and I found the Employment Pathway resources practical and helpful” (Adrian, Year 13).

RESOURCES AND FACILITIES

Hinchingbrooke Sixth Form is exceptionally located in Hinchingbrooke House, a grade 1 listed building. The setting is unique and beautiful, but is also a modern learning environment.

Learners' study and social facilities are based in the House and have been consistently upgraded over the years to provide the very best resources and facilities in terms of designated independent study areas and social spaces. Access to IT is ample, and there are spacious IT suites.

The whole of the House has Wi Fi access which enables students' laptops and mobile devices to access the school broadband network.

The Year 12 and Year 13 Common Rooms are equipped with sofas, and there are other comfortable and charming spaces in which students can relax and enjoy the less busy parts of the day. We have an excellent canteen, popular with students (and staff), not least the fresh coffee and much-praised 'curly fries Tuesdays'.



Year 13 parent: "Now that she has successfully completed her time at Hinchingbrooke School we would like to thank all of you who have been involved in teaching her and/or providing outstanding pastoral care during difficult periods, particularly in Sixth Form. With your support, guidance and understanding she has managed to tackle and get through very challenging situations, reaching a stability which has encouraged her to make positive plans for the future. Without your continuous help and work with us, this would not have been possible. Please may you give our sincere gratitude to everyone who has been part of her journey during the last two years and to the wonderful pastoral care team who has been standing by us throughout her time at the school."

Year 13 parent: "I want to tell you how very grateful I am to all of those people who have helped my son so much during his two years at the school. You all, teachers and support staff, have been magnificent! You have really demonstrated dedication, generosity and true kindness to him. He's clearly enjoyed his time with you, and learnt so much. Strong lessons in life, as well as in subject areas! All with a unique and full-hearted sense of humour and warm humanity."

CURRICULUM

Over the next pages are the courses which we will be offering in the Sixth Form from September 2021.

As in any other year, the information in this prospectus describes the courses we fully intend to offer in as much detail as we have at present. We do, however, reserve the right to make changes according to circumstances.

In order to qualify for the Sixth Form you need **five GCSEs at a 5 or above**, including **English** and **Maths** at least at a 4. **However there are fewer subject choices appropriate for a student who does not pass English GCSE with a 5. If a student has not qualified for the courses for which they have applied and we are unable to find them suitable alternative choices, we reserve the right in that instance to withdraw their offer of a place.** There may also be circumstances where a student will not achieve the general entry criteria, but we are nonetheless able to offer them an appropriate programme, particularly when on creative, performance, or vocational courses. **We will decide these offers on a case by case basis.**

Most subjects offering 'A' Levels make a 5 a condition of entry onto that course, and some courses (Maths, Computing, the sciences and languages) have higher entry criteria. **Please check the subject pages for courses' specific entry requirements.**

At Hinchingsbrooke we enter all of our students for two year courses, in most cases in three subjects, but in some cases four subjects if this is appropriate (see our Pathways diagram on page 12). This means that whichever courses you choose, our expectation is that you will be carrying them all on into Year 13. However, we also recognise that in Year 12 in particular students who have good organisational skills and a good work ethic have the capacity to study more widely than their three core subjects. As well as the EPQ and Core Maths, we also offer one year options in Dance, Drama and Modern Foreign Languages in which students can take an AS or equivalent at the end of Year 12, and then reduce their programme to three core subjects for Year 13. For the full list of courses please go to page 13.

Any student who does not gain a grade 4 in English or Maths, must resit this in November of Year 12. Students who achieve a 4 and wish to resit to improve their grade to a 5, can also be included in this option.



KEY SIXTH FORM AND DEPARTMENTAL CONTACTS

If you would like more information about the Sixth Form – please contact one of our team . If you have a subject specific query, please do get in touch with the Head of Department from the list below.

Role	Name	Email	Ext
Director of Sixth Form	Mrs V Rix	vkcr@hinchbk.cambs.sch.uk	5745
Deputy Director of Sixth Form (Head of Year 12)	Mrs S Moore	sjm@hinchbk.cambs.sch.uk	5742
Deputy Director of Sixth Form (Head of Year 13)	Mrs K Moyes	kfm@hinchbk.cambs.sch.uk	5742
Student Support Officer	Ms J Edwards	jce@hinchbk.cambs.sch.uk	5744
Sixth Form Administrator	Mrs A Stephenson	acs@hinchbk.cambs.sch.uk	5744

SUBJECT	Head Of Department	Email	Ext
Art	Mr D Reed	dsr@hinchbk.cambs.sch.uk	5768
Business/Economics	Ms S Haines	syh@hinchbk.cambs.sch.uk	5710
Computing	Mr D Bowen	dib@hinchbk.cambs.sch.uk	5802
Dance	Ms M Trewin	mlt@hinchbk.cambs.sch.uk	5785
Design & Technology	Ms A Lombard	aml@hinchbk.cambs.sch.uk	5767
Drama	Mrs N Akielan	nla@hinchbk.cambs.sch.uk	5605
English	Miss S Spikesley	sls@hinchbk.cambs.sch.uk	5759
Extended Project	Mrs C Black	cmb@hinchbk.cambs.sch.uk	5795
Film and Media	Mr P Lloyd	pl@hinchbk.cambs.sch.uk	5743
Geography	Mr B Evans	bje@hinchbk.cambs.sch.uk	5795
History	Mr J Leigh	jdl@hinchbk.cambs.sch.uk	5761
Maths	Mrs C Gratton	ceg@hinchbk.cambs.sch.uk	5788
Modern Languages	Mrs A Roberts	amr@hinchbk.cambs.sch.uk	5796
Music/Music Technology	Mr W Cooke	wrc@hinchbk.cambs.sch.uk	5783
PE and Sport	Mr J Turnbull	jat@hinchbk.cambs.sch.uk	5785
RPE	Miss C Newman	cn@hinchbk.cambs.sch.uk	5798
Science	Mrs C Olsen	eco@hinchbk.cambs.sch.uk	5773
Social Sciences	Ms S Dearnaley	sd@hinchbk.cambs.sch.uk	5747

COURSES FROM 2021

Below is the list of courses offered in the Sixth Form for entrants in 2021. They are 'A' Levels unless stated otherwise. Details of courses are on pp 16 onwards.

Art
Art (Contemporary)
Biology
Business Studies
Chemistry
Computing
Criminology Level 3 Diploma*
Dance BTEC*
DT
Drama BTEC
Economics
English Language
English Literature
Extended Project
Film Studies
Financial Studies Level 3 Diploma
French
Geography
German
History
Maths and Further Maths
Maths Level 3 (Core Maths)
Media Studies
Music
Music Technology
PE
Politics
Photography
Physics
Psychology
Religion, Philosophy and Ethics
Science BTEC
Sociology
Spanish
Sport BTEC



*'Diploma' and 'BTEC' courses are 'A' Level equivalent vocational courses offered by different exam boards.

COURSES FROM 2021: ADVISED CURRICULUM PATHWAYS

Please note these pathways are descriptive, rather than prescriptive; if a student wishes to do subjects from other pathways, providing they are qualified, and have received guidance from us, they can.

Achieved some grade 4s at GCSE. Will have an average point score of 5 or below 5.	Typically, students with this profile will do three subjects, choosing from the courses below: <ul style="list-style-type: none">• Art (Fine)• Art (Contemporary)• Criminology• Dance BTEC• Drama BTEC• DT Product Design• Financial Studies• Film Studies• Music Technology• Photography• Sport BTEC
--	--

Will have an average point score of between 5 and 6	Students with this profile will do three subjects from the list above, and/or those below: <ul style="list-style-type: none">• Business Studies• English Language• English Literature• Economics• French• Geography• German• History• Media Studies• Music• Politics• Psychology• RPE• Science BTEC• Sociology• Spanish
--	---

Will have an average point score of between 6 and 7	Students with this profile, if they wish to go to university, might be expected to be progressing to a top university. They will typically do three 'A' Level subjects, from the lists above, and/or those below. They should consider the Extended Project, or Core Maths if relevant (see p11).. <ul style="list-style-type: none">• Biology• Chemistry• Computing• Maths• Physics
--	---

Will have an average point score of above 7	Students with this profile, if they wish to go to university, would be expected to be progressing to a top university, and should consider Oxbridge. <p>They can if they wish do four subjects (though in some cases the fourth may be Further Maths) from the lists above, and they should strongly consider doing at least two of what used to be called facilitating subjects (see p6).</p> <p>They should do the Extended Project if they are not doing four 'A' Levels.</p>
--	---

COURSES FROM 2021: ENTRY CRITERIA

Subject	Entry Criteria
Art	4 in Art*
Art (Contemporary)	4 in Art*
Biology	7 in Biology and 6 in Maths. For Combined Science students, grade 7-7 in Science and 6 in Maths
Business Studies	5 in English Language and Maths*
Chemistry	7 in Chemistry and 6 in Maths. For Combined Science students, grade 7-7 in Science and 6 in Maths
Computer Science	7 in Computer Science*
Criminology Level 3 Diploma	4 in English Language
Dance BTEC	Dance experience needed*
DT	5 in a design related subject*
Drama BTEC	4 in Drama (or performing equivalent)
Economics	5 in English and, preferably, 6 in Maths*
English Language	5 in English Language or English Literature
English Literature	5 in English Language or English Literature
Extended Project	An average of a 6 or above
Film Studies	4 in English Language
Financial Studies Level 3 Diploma	4 in English Language, 4 in Maths
French	6 in French
Geography	5 in Geography
German	6 in German
History	5 in History. 5 in English Language*
Maths	7 in Maths
Maths (Further)	8 Maths.
Mathematical Studies Level 3	4 in Maths
Media Studies	5 in English Language.
Music	5 in Music.*
Music Technology	4 in Music.*
PE	4 in Science and 4 in PE are preferable but not required.
Photography	4 in Art.*
Physics	7 in Physics and 6 in Maths. For Combined Science students, grade 7-7 in Science and 6 in Maths.
Politics	5 in English Language.
Psychology	5 in at least one science and 5 in Maths and English Language.
Religion, Philosophy and Ethics	5s in English Language, and, preferably, Religious Studies.
Science BTEC	4 in English Language and Maths, 5s in Double Science.*
Sociology	5 in English Language.
Spanish	6 in Spanish
Sport BTEC	4 in English Language

*= there is further information about entry criteria in this subject in the subject pages starting p16.

Art 'A' Level (Fine Art: Painting & Drawing)

Why Study Art?

- If your intention is to follow a creative career.
- The course is designed to encourage creativity, imagination and independence based on personal experience, taught skills and critical understanding, transferable to other areas.
- To study as a subject that may be either a positive contrast or complement to your other chosen subjects – Photography, Film Studies, Media Studies, The Social Sciences, Maths, Music, Performing Arts, Dance,

What Does The Course Involve?

This is a specific area of study around Painting and Drawing.

Students will work in areas such as: portraiture, landscape, still life, the human form, abstract and narrative.

Materials and techniques will include: learning a range of techniques in oil painting, acrylic painting, watercolour painting, mark making in drawing materials and mixed media.

A wide range of artists and art movements will be studied, including Contemporary works.

Trips & Additional Activities

There are trips out to relevant galleries and exhibitions in London throughout the course, such as the Tate Modern the Courthauld Institute, The BP Portrait Prize and National Portrait Gallery.

There is a foreign trip in May of Year 12 and residential UK trip at the beginning of Year 13. University and Degree Show trips are also organised; including to our partner the University of Creative Arts.

Lectures by department staff and guest visitors are organised throughout the course, and portfolio sessions and workshops are run in Year 13. Creative work experience placements are facilitated.

How Will I Be Assessed?

Exam board: AQA

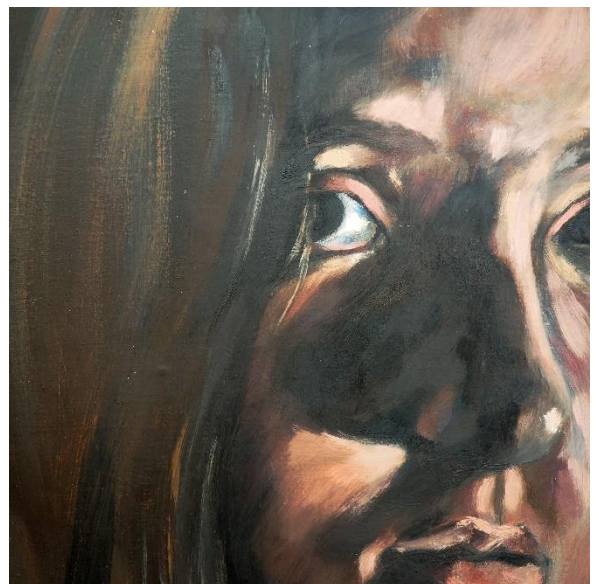
1. Component 1 – Personal Investigation (60% of the final grade):
 - a portfolio of practical work in response to a brief or stimulus, devised and provided by the centre;
 - a related study: an extended response of between 1000 and 3000 words.
2. Component 2 – Externally Set Task (40% of the final grade) 12 week prep period and 15 hour exam

Leading to a Career/ Further Courses In?

Architecture, Interior Architecture, Fine Art, Art Historian, Graphic Design, Computer Aided Design, Games Design, work in aspects of Film and TV, Photography, Illustration, Museum and Curating work, etc.

What Are The Entry Requirements?

4 in Art. This course cannot be taken with Contemporary Fine Art but can be taken with Photography.



Art 'A' Level (Contemporary Fine Art)

Why Study Art?

- The course is designed to encourage creativity, imagination and independence based on personal experience, taught skills and critical understanding, transferable to other areas.
- To study as a subject that may be either a positive contrast or to complement your other chosen subjects – Photography, Film Studies, Media Studies, The Social Sciences, Maths, Music, Performing Arts, Dance.

What Does The Course Involve?

This is a broad course of study.

Students will work in areas such as: portraiture, landscape, still life, human form, abstraction, narrative, experimental imagery and working in a genre.

Materials and techniques could include: Mark making, mixed-media, painting, collage, lino printing, etching, collograph, intaglio, batik, felt making, applique, textiles, fashion, ceramics, sculpture, plaster casting, digital manipulation, installation, sound work. A wide range of artists, designers, crafts people and art movements will be studied, including Contemporary works.



Trips & Additional Activities

There are trips out to relevant galleries and exhibitions in London throughout the course, such as the Tate Modern, the Design Museum, the V&A and the Whitechapel Gallery.

There is a foreign trip in May of Year 12 and residential UK trip at the beginning of Year 13. University and Degree Show trips are also organised; including to our partner the University of Creative Arts.

Lectures by department staff and guest visitors are organised throughout the course, and portfolio sessions and workshops are run in Year 13. Creative work experience placements are facilitated.



How Will I Be Assessed?

Exam board: AQA.

1. Component 1 – Personal Investigation (60% of the final grade):
 - a portfolio of practical work in response to a brief or stimulus, devised and provided by the centre
 - a related study: an extended response of between 1000 and 3000 words.
2. Component 2 – Externally Set Task (40% of the final grade) 12 week prep period and 15 hour exam

Leading To A Career/ Further Courses In?

Textile Design, Fashion Design, Fashion Communication, Surface Design, Sculptor, Product Design, 3D Design, Interior Design, Fine Art, Art Historian, Graphic Design, Computer Game Design, Photography, Illustration, Animation, Digital Design.

What Are The Entry Requirements?

4 in Art. This course cannot be taken with Fine Art but can be taken with Photography.

Why Study Biology?

In Biology you will develop practical skills by planning experiments, collecting data, analysing experimental results and making conclusions. You will also learn how scientific models are developed, the applications and implications of science, the benefits and risks that science brings and the ways in which society uses science to make decisions.

Biology is a science at the forefront of some of the most exciting and controversial issues in the news today. Current publicity surrounding genetic engineering, environmental and medical developments have highlighted the need for an understanding of such issues. Biology seeks to explore these areas of study to provide an appreciation of the living world.

What Does The Course Involve?

- Module 1 – Development of practical skills in biology: skills of planning, implementing, analysis and evaluation
- Module 2 – Foundations in biology: cell structure and membranes; biological molecules; DNA; cell division, diversity and organisation
- Module 3 – Exchange and transport: exchange surfaces; transport in animals; transport in plants
- Module 4 – Biodiversity: evolution and disease; communicable diseases and prevention; immune system; biodiversity; classification and evolution
- Module 5 – Communication, homeostasis and energy: communication and homeostasis; excretion; neuronal communication; hormonal communication; plant and animal responses; photosynthesis; respiration
- Module 6 – Genetics, evolution and ecosystems: cellular control; patterns of inheritance; manipulating genomes; cloning and biotechnology; ecosystems; populations and sustainability

How Will I Be Assessed?

Exam Board OCR. There are 3 papers plus a practical endorsement.

Leading To A Career In?

Undergraduate degree courses: Medicine, Biomedical Sciences, Life Sciences, Forensic Science, Physiotherapy, Veterinary medicine, Biochemistry, Paramedical work, Nutrition, Ecology, Biology, Marine Biology, Sport Science, Food Science, Environmental Monitoring and the expanding field of Microbiology and Biotechnology.

There are also numerous career paths that will utilise the knowledge and skills gained at 'A' Level Biology.

What Are The Entry Requirements?

For Triple Science students, 7 in Biology and 6 in Maths. For Combined Science students, grade 7-7 in Science and 6 in Maths.

Why Study Business?

What does 'furlough' mean? Who's just bought ASDA? Should the USA be imposing trade sanctions on China? What are the implications of this political move? A set of company accounts shows that despite a turnover of £1.3m last year; they not making a profit; why? Are managers worth high salaries? Why don't women earn as much as men? Is globalisation good or bad for consumers? Is there room for ethics in business? How do businesses cope with external shocks such as a global pandemic?

If you are interested in discovering the answers to these and many more questions, then A Level Business is for you. Not just a theoretical subject, but about real life, by studying this A Level you will gain an insight into the dynamic world of business. You will gain an holistic understanding of business in a range of contexts, developing a critical understanding of organisations and their ability to meet society's needs and wants. The skills you develop (decision making, problem solving, the challenging of assumptions and critical analysis) are in demand by employers and universities alike. Studying A Level Business will equip and prepare you not just for Higher Education, but beyond. Whether you want to start your own business, work in the private or public sector, or even have ambitions to become the next Richard Branson, A Level Business will give you the knowledge and understanding necessary to take those next steps.

What Does The Course Involve?

You will study a broad range of topics, from the role of an entrepreneur to controlling multi national corporations. You will consider business ethics, exploring issues of wage discrimination, animal rights and treatment of workers in foreign countries. Your numerical skills will be honed as you develop the knowledge and understanding of how to interpret a set of company accounts and learn how to carry out investment appraisal. The business world is fast moving; the A Level in Business expects you to keep up to date with current news stories and ever-changing developments. The final exam paper is based on a pre-released case study, allowing you the opportunity to carry out in depth research into a real business industry or problem. An intensive study workshop visit will equip you to achieve your full potential in your final exams.

How Will I Be Assessed?

Exam board: Edexcel. 100% exam based.

Paper 1 Marketing, people and global business 35%

Paper 2 Business activities, decisions and strategy 35%

Paper 3 Investigating business in a competitive environment 30%

Leading To A Career In?

Degrees in Business, Management, Human Resources, Accountancy, Law, Finance, Philosophy, Politics and Economics, Sociology and Psychology. Careers with a Business degree have high earning potential.

Career possibilities include: banking, insurance, marketing, human resources, distribution, sales, accounting, law, education, central or local government, business consultancy, entrepreneurship, management.

What Are The Entry Requirements?

5s in English and Maths. You do not have to have studied Business previously but if you have, you should have achieved GCSE Grade 5. If you have a 5 in Maths we will require you to do a numeracy test to ensure you can access the mathematical demands of the course.

Why Study Chemistry?

Are you open-minded, imaginative, argumentative, methodical, logical and determined? Do you wonder about the world, how it works and how mankind is changing it? If so, you will probably be interested in 'A' Level Chemistry at Hinchingsbrooke. It is a rewarding but demanding course, which sets the subject within a relevant and modern-day framework, without sacrificing intellectual rigour. It builds on the higher concepts learnt at GCSE and appeals to students who like to ask the questions 'why', 'how' and 'what' and are keen to find out the answers.

What Does The Course Involve?

- Module 1 - Development of practical skills in Chemistry: skills of planning, implementing, analysis and evaluation
- Module 2 – Foundations in Chemistry: atoms, compounds, molecules and equations; amount of substance; acid–base and redox reactions; electrons, bonding and structure
- Module 3 – Periodic Table and energy: the Periodic Table and periodicity; Group 2 and the halogens; qualitative analysis; enthalpy changes; reaction rates and equilibrium (qualitative)
- Module 4 – Core organic Chemistry: basic concepts; hydrocarbons; alcohols and haloalkanes; organic synthesis; analytical techniques (IR, MS)
- Module 5 – Physical Chemistry and transition elements: reaction rates and equilibrium (quantitative); pH and buffers; enthalpy, entropy and free energy; redox and electrode potentials; transition elements
- Module 6 – Organic Chemistry and analysis: Aromatic compounds; carbonyl compounds; carboxylic acids and esters; nitrogen compounds; polymers; organic synthesis; chromatography and spectroscopy (NMR).



How Will I Be Assessed?

Exam Board: OCR. There are 3 papers plus a practical endorsement.

Leading To A Career In?

As far as employment prospects are concerned, Chemistry is a 'heavyweight' subject, essential for many scientific careers and highly regarded for non-vocational jobs. It has obvious relevance for medicine and veterinary science, as well as jobs in businesses involved in drugs and medicine manufacture, agriculture, brewing, food, biotechnology and forensic science – to name just a few. Any student qualified in Chemistry will automatically be regarded as someone who is numerate, well organised, self-motivated and intellectually adept – useful qualities to bring to any job.

What Are The Entry Requirements?

For Triple Science students, 7 in Chemistry and 6 in Maths. For Combined Science students, grade 7-7 in Science and 6 in Maths.

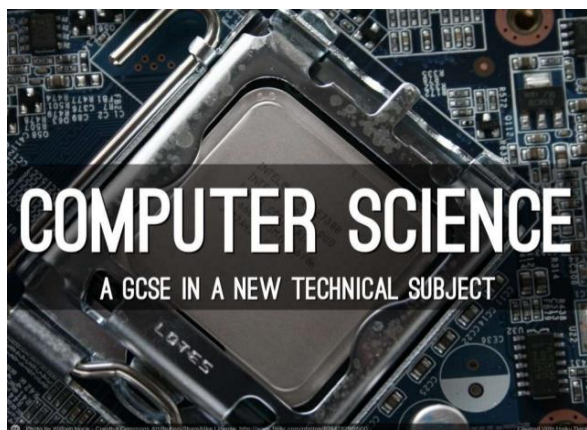
Computer Science 'A' Level

Why Study Computer Science?

This qualification is relevant to the modern and changing world of computing, and is also relevant to the higher education community. Computer Science is a practical subject where students can apply the academic principles learned in the classroom to real-world systems. It's an intensely creative subject that combines invention and excitement. The course values computational thinking, helping students to develop the skills to solve problems, design systems and understand the power and limits of human and machine intelligence. It is designed to inspire and challenge students to apply the knowledge they gain with the creative and technical skills they acquire. Other aspects are:

- 'A' Level Computer Science is focused on programming; it builds on GCSE Computing and emphasises the importance of computational thinking as a discipline.
- There is an expanded Maths focus, much of which is embedded within the course.
- There is an increased emphasis on coding and programming.

What Does The Course Involve?



Unit 1: Computer Systems

Covers the characteristics of contemporary systems architecture and other areas including the following:

- Software and its development
- Types of programming languages
- Data types, representation and structures
- Exchanging data and web technologies
- Following algorithms
- Using Boolean algebra
- Legal, moral and ethical issues.

Unit 2: Algorithms and Programming

- Elements of computational thinking
- Programming and problem solving
- Pattern recognition, abstraction and decomposition
- Algorithm design and efficiency, and Standard algorithms

Unit 3: Programming Project

You are set a user-driven problem of an appropriate size and complexity to solve. You will need to analyse the problem, design a solution, implement the solution and give a thorough evaluation.

How Will I Be Assessed?

Exam board: OCR. 80% exam, 20% coursework.

Leading To A Career In?

Typical roles in industry include software engineer, developer, analyst, project manager, software architect, tester and operational manager; career development opportunities are almost unlimited within the industry.

What Are The Entry Requirements?

7 in Computing, or department approval needed. This will involve demonstrating confidence with programming skills through the successful completion and acceptance of Summer Coding assignment. Preferably 6/7 in Maths and sciences.

Why Study Criminology?

Not all types of crime are alike. Are you interested in the different types of crime that take place in our society? Are criminals born, or made? How do we decide what behaviour is criminal? What are the different roles of everyone involved when a crime is detected?

Criminology is a course that combines the subjects of Psychology, Law, Politics and Forensic Science to form a new discipline of its own. This is a growing subject nationally. The course can broaden your field of study in the social sciences. You will explore the causes of criminal behaviour, attitudes to crime, criminal investigations and the wider social and psychological aspects of crime.

By studying the underlying causes of crime, we potentially develop solutions. Part of this is exploring ways of how to rehabilitate the criminal. You will explore theories of criminality and use these to analyse criminal scenarios and put forward possible ways of improving society's response to crime, and hence of reducing it.

What Does The Course Involve?

The course covers an exciting range of topics, covering the Changing Awareness of Crime, Criminological Theories, Crime Scene to Courtroom and Crime and Punishment.

Unit 1 – Changing Awareness of Crime

You will explore how crime reporting affects the public perception of crime and criminals. You will then go on to study how campaigns are used to bring about change and plan a campaign of your own.

Unit 2 – Criminological Theories

You will discover and assess all the theories that have been put forward to explain why crime occurs.

Unit 3 – Crime Scene to Courtroom:

You will gain an understanding of the process of criminal investigations. You will then go on to learn about the prosecution of suspects and be able to review criminal cases.

Unit 4 – Crime and Punishment

You will study every aspect of the criminal justice system and the types and purposes of punishment in England & Wales.

How Will I Be Assessed?

Exam board: WJEC. 50% exam, 50% coursework.

Leading to A Career In?

This course is ideal for anyone who wishes to pursue a career in Criminology. This course can provide a route into Higher Education to study at degree level in a variety of areas such as Criminology, Criminal Justice, Psychology and Forensic Science.

The course would also provide an excellent basis to anyone wishing to pursue a career within Social Work, Mental Health, the Police Force, Customs and Immigration, Prison Services, Court Services, Security Services, the NHS, Education and Youth and Community Services

What Are the Entry Requirements?

4 in English Language.

Why Study Dance?

Studying Dance prepares students for a lifetime career in the performing arts. Our Dance course sets out to create self-aware dancers who are highly educated and knowledgeable as well as versatile, creative, and technically accomplished. There are numerous aspects that will be learnt and developed on this course – leadership, ability to choreograph, teamwork, improved fitness, improved confidence, opportunities to perform and compete as well as providing a varied skill-set for students to expand upon in their C.V's / University applications.

What Does The Course Involve?

In a normal week you will attend some practical and some theoretical lessons. You will do this course alongside other 'A' Levels. There is a new specification that is broken down as follows:

YEAR 12

- Study exam board-set work
- Create piece on set work
- Create piece in contrast to set work
- Essay to compare and contrast works
- 3 repertoires based on professional works

YEAR 13

- Lengthy own choreography assignment
- 4 repertoires based on professional works



How Will I Be Assessed?

Exam Board: Edexcel. The course is vocational and assessed through coursework – rehearsals, performances, research, written assignments, reflective writing, discussion, presentations and evaluations. Over two years, you will compile a portfolio of coursework. There will be certain key dates and deadlines for some pieces of work.

- Half 'A' Level equivalent – Year 1: BTEC Level 3 Certificate in Performing Arts: DANCE
- Full 'A' Level equivalent – Year 2: BTEC Level 3 National Extended Certificate in Performing Arts: DANCE

The nature of a BTEC allows for a more varied and vocational approach to student learning, with coursework, portfolio and video evidence at its heart.

- Some of the above pieces will be externally assessed – via video evidence
- Some of the above pieces will be internally assessed – by Dance teaching staff
- Coursework Evidence is needed alongside the above – to include evidence of rehearsals, performances, research, written assignments, reflective writing, discussion, presentations and evaluations.

Leading To A Career In?

University: study Dance at degree level

Work: teacher / dance therapist / community worker / professional dancer / artist in residence / travel & tourism

Support other courses – acting / singing / stage work / make-up / theatre / music / film

What Are The Entry Requirements?

Dance experience and an interest and understanding of dance as an expressive art form is needed. Dance at GCSE or BTEC Level 2 is preferred, but not essential.

Design & Technology: Product Design 'A' Level

Why Study Design & Technology?

Good design is vital to our world and our economy. Innovation, creativity, problem solving, experimenting. There is a strong demand for students in the Design, Engineering and Construction industries who are capable of developing solutions to today's problems. This course provides you with a solid base from which to develop your Design and Making skills, using a range of materials and manufacturing methods to become Designers and Engineers of the future.



This course allows students to provide solutions to 'real' problems linked to product design, interior design and architecture. Students will work with a range of clients across different projects. This course combines diverse areas of DT and is suitable for anybody who has studied DT, Product Design or Engineering at GCSE.

What Does The Course Involve?



There will be a series of smaller projects during year 12 to build skills including; technical drawing, technics, processes, machinery and tools, CAD/CAM before a major project for the coursework element.

Students focus on understanding the various aspects of the Design Cycle and the design and make process.

Nothing has 'just been made'. All aspects of the world around us are designed and made considering clients, end users, materials, processes and the effect this all has on our planet.

Students will continually be developing designing and making skills with a focus on drawing, research, design concepts, evaluating, modelling and making skills in all projects. Projects will also include aspects of theoretical knowledge in preparation for their end of year 13 exam.

How Will I Be Assessed?

You will be studying AQA Product Design which is 50% Coursework (NEA) and 50% Exam. The coursework is a project of your choosing where you will Research, Design, Develop, Test and Evaluate your end product. The Exam at the end of Year 13 will test the theory learnt over the two years.

Leading To A Career In?

Product Design, Robotics, Automotive Industry, Digital Media, Aerospace, Civil Engineering, Construction, Architecture, Interior Design, Armed Forces, Graphic Design or an Art foundation course. This course will help you to demonstrate a wide range of skills in your portfolio. It is a subject that links well to other areas of the curriculum such as Maths, Physics, Geography, Art, Photography and others, even if you do not continue with a design career.

What Are The Entry Requirements?

5 in a design related subject at GCSE. Students achieving a 4 will require departmental approval.

Why Study Drama BTEC?

Drama expands your self-confidence, creativity, and through these your potential in so many other areas of life. The Extended Certificate (called 'Performing Arts' but focused on acting) is for students who are interested in learning about the performing arts sector alongside other fields of study, with a view to progressing to a wide range of higher education courses, not necessarily in performing arts.

What Does The Course Involve?

Unit 1 – Investigating practitioners work

You will investigate the work of performing arts practitioners and develop critical analysis skills and contextual understanding of how practitioners communicate themes in their work.

Unit 2 – Developing skills and techniques for live performance

You will explore technical performance skills with a focus on developing skills and techniques in at least two performance styles. You will participate in regular workshops, classes and exercises where you will acquire, practise and develop the necessary technical, practical and interpretative performance skills to help you succeed when performing live to an audience.

Unit 3 – Group performance workshop

You will explore and integrate creative, physical and vocal skills and techniques, working collaboratively to create a performance in response to a given stimulus. Many professional practitioners work as devising companies to develop new, and often innovative, performance material. This may be in response to a specific commission, to meet the needs of a target audience, or to explore an artistic theme or idea.

Flexible Unit - A range to choose from acting styles and interpreting classic texts to improvisation.

How Will I Be Assessed?

Exam board: Edexcel.

The course is split into 4 Units - 3 compulsory modules and 1 flexible choice from a range of exciting options.

Assessment is threefold – students are assessed through a combination of portfolio production, graded practical activities and through performance to a live audience.



Leading To A Career In?

Acting or performance; stage management; technical design, sound, lighting, costume, set and props; social care or social setting; television and media; teaching; uniformed services

Any job that involves working in a team, with people or presenting to a group!

What Are The Entry Requirements?

4 in Drama (or performing equivalent).

Why Study Economics?

Should we care about BREXIT? Why don't 'THEY' spend more money on saving jobs during the global pandemic? Who are 'THEY' and where do they get their money from? How do you put a cost on the environmental impact of economic activity? The pound's getting weaker. Is that good or bad? The Bank of England target for inflation is 2%, so how is it that this figure is so hard to maintain? And why do we want inflation anyway? If prices go up, why can't we have wage increases to match? How can we continue to meet ever increasing wants and needs from finite economic resources? Will studying Economics mean I will earn more money?

If you are interested in discovering the answers to these and many more questions, then A Level Economics is for you. Gone are the days when Economics was a dry, theoretical subject, Economics is a live, ever changing subject that explores the world around us. Without a knowledge of Economics, how can you understand what is being reported in the news or trust what politicians are telling you? Coming out of the 2009 financial crisis has been a long, slow haul for the UK economy. Now we are facing the challenges posed by BREXIT and the global pandemic. If you want to understand what is happening in the economy, then A Level Economics is a great place to start. And yes, studying Economics has been shown to lead to higher earnings (a number of reports show that Economics graduates earn more than other students, although we can't guarantee you'll be a millionaire!). Whilst Economics isn't a facilitating subject as it is not specifically required for entry to degree courses, it is recognised by universities as a subject which provides 'suitable preparation for entry to university', Russel Group Informed Choices. Economics fits particularly well with Maths, Politics and Geography.

What Does The Course Involve?

You will study a broad range of topics, from the basic economic problem of how we meet ever increasing wants and needs from finite resources, to how to control the economy through monetary and fiscal policy. Economics is broken down into two sub topics: macro and microeconomics. Macro looks at the economy as a whole, for example, how the government and Bank of England use monetary and fiscal policy to create the right environment for firms to operate. Microeconomics considers the way that firms behave. You will need strong mathematical skills and a good sense of logic. Intensive study workshop visits will equip you to achieve your full potential in your final exams.

How Will I Be Assessed?

Exam board: tbc. 100% exam based. 3 x 2 hour papers.

Leading To A Career In?

Economics will open doors to a wide range of university degree courses and careers. Former Economics students have gone on to study: Accounting, Business Management, Economics, History, Construction Management, Politics, Social Policy, and even Dentistry!

Economics could lead you to a career in finance, the City, stockbroking, currency trading, fund management, central and local government planning, charity management, education and management.

What Are The Entry Requirements?

5 x GCSE at grade 5 or above, including 5 in English and 6 in Maths. You do not need to have studied Business previously but, where you have, you should have achieved GCSE Grade 6. If you have a 5 in Maths we will require you to do a numeracy test to ensure you can access the mathematical demands of the course, a test all students will sit so we can assess your numeracy needs.

English Language 'A' Level

Why Study English Language?

If you want to understand how language is used to control and manipulate us by both the media and people in power; how to take apart a piece of language and be able to work out exactly what makes it tick, produce your own language investigation AND dabble in your own creative writing then this is the course for you.

What Does The Course Involve?

Paper 1 40 % - Language, the Individual and Society

A focus on individual and immediate social contexts for language, exploring textual variety and language development.

Section A: Textual Variations and Representations

You will explore significant features and patterns in language across a variety of texts. When exploring multiple texts, these will be linked by topic or theme to prepare you for a comparative task in this section.

Section B: Children's Language Development

You will delve into the fascinating world of child language development, exploring how children develop their spoken and written skills.

Paper 2 40%: Language Diversity and Change

You will consider language outwardly, reflecting on larger-scale public discourses about change and variety, drawing on regional, ethnic, national and global English.

Section A: Diversity and Change

You will explore a range of examples of language in use and research data to inform your study of diversity and change. This will include analysis of texts using different sociolects and dialects and texts that highlight the influences that technology has had on language.

Section B: Language Discourses

You will consider how texts use language to present ideas, attitudes and opinions. This section also offers you the opportunity to put your own discursive writing skills to the test on a subject linked to language in use.

Non-exam assessment 20%– Language in action

The aim of this non-exam unit is to allow you to explore and analyse data independently and develop and reflect upon your own writing expertise. You will carry out two different kinds of individual research...

Language Investigation

You will undertake an independent investigation of language on a topic of your own choice. You will choose your own methodologies; select and analyse your own data and draw suitable conclusions from them.

Original writing and commentary

For the original writing task, you will produce one piece of original writing based on the power of persuasion, storytelling or information. You will complete a commentary allowing you to reflect upon your decisions, the writing process and the effectiveness of your final piece.

How Will I Be Assessed?

Exam board: AQA. 80% exam, 20% coursework.

What Are the Entry Requirements?

5 in English Language or English Literature.

Leading To A Career In?

'A' Level English Language can help many career paths including journalism, writing, teaching, politics and the law.

Why Study English Literature?

In studying English Literature you will develop interest in and enjoyment of the subject through reading widely, critically and independently across centuries, genre and gender. You will consider how writers – including you – succeed in shaping the responses and opinions of others. In essence, "The study of English Literature trains the brain and frees the imagination; it is about life and living and just where you fit into the world around you."

What Does The Course Involve?

Component One 40 %

You must study one play by Shakespeare. In addition, you are required to study one pre-1900 drama text and one pre-1900 poetry text.

Set Texts Shakespeare:

- *Coriolanus*
- *Hamlet*
- *Measure for Measure*
- *Richard III*
- *The Tempest*
- *Twelfth Night*

Set Texts Pre-1900 drama

- Christopher Marlowe: *Edward II*
- John Webster: *The Duchess of Malfi*
- Oliver Goldsmith: *She Stoops to Conquer*
- Henrik Ibsen: *A Doll's House*
- Oscar Wilde: *An Ideal Husband*.

Set Texts Pre- 1900 Poetry

- Geoffrey Chaucer: *The Merchant's Prologue and Tale*
- John Milton: *Paradise Lost* Books 9 & 10
- Samuel Taylor Coleridge: *Selected Poems*
- Alfred, Lord Tennyson: *Maud*
- Christina Rossetti: *Selected Poems*.

Component Two: Comparative and Contextual study 40%

You choose one topic from the set list below and study at least two whole texts in your chosen topic area.

Set Topics and Core texts

American Literature 1880–1940

- F Scott Fitzgerald: *The Great Gatsby*
- John Steinbeck: *The Grapes of Wrath*

The Gothic

- Angela Carter: *The Bloody Chamber*
- Bram Stoker: *Dracula*

Dystopia

- Margaret Atwood: *The Handmaid's Tale*
- George Orwell: *Nineteen Eighty-Four*

Set Topics and Core texts

Women in Literature

- Jane Austen: *Sense and Sensibility*
- Virginia Woolf: *Mrs Dalloway*

The Immigrant Experience

- Mohsin Hamid: *The Reluctant Fundamentalist*
- Henry Roth: *Call It Sleep*

Component Three: Literature post-1900 20%

You choose and study one poetry text, one drama text and one prose text all written before 1900.

How Will I Be Assessed?

Exam Board OCR. 80% exam, 20% coursework.

Leading To A Career In?

'A' Level English Literature can lead to many career paths including journalism, writing, teaching, politics and the law.

What Are The Entry Requirements?

5 in English Language or English Literature.

Extended Project Qualification

Why Study the Extended Project Qualification (EPQ)?

The Extended Project Qualification is an optional curriculum extra for students. The subject enables you to gain a qualification whilst spending time on something you are passionate about. You can tailor what you study to extend your A-levels and personalise your further education/career goals (it is worth half the UCAS points of a full 'A' Level).

There is variety of formats in which you can present the work you complete: a dissertation, an investigation/field study, a performance or an artefact. You could study medical ethics if you want to go into the medical profession, human rights as you want to study law or perhaps clothes design because you want to work in the world of fashion.

The choice is limitless. It also enables you to develop and improve your ability to be a critical, reflective and independent learner; learning how to analyse, synthesis, evaluate and present your work to a high level. This can only support your progress in other subjects and looks fantastic in personal statements and job applications.

What Does the Course Involve?

As an EPQ student you will have both a teacher and a tutor. Your teacher will see you for one period a week where you will have seminar style lessons to ensure you gain all the skills you require to complete a successful EPQ. As you start writing your EPQ you will continue to have lessons so that this teacher ensures that you are demonstrating all the skills you have learnt. You will also be allocated a tutor (where possible one who is knowledgeable in your chosen study area). You will be expected to meet this tutor fortnightly to discuss the content of your EPQ and for them to assess your progress.

How Will I Be Assessed?

Exam board: Pearson - Edexcel

You will be assessed on your ability to plan, manage, complete and review your project. You will start the EPQ in Year 12 and hand in your final submission at the start of Year 13. Your work will be marked internally by your tutor and moderated externally by Edexcel.

What Are the Entry Requirements?

The EPQ is an optional curriculum extra for students who gain a GCSE point score 6 or above. Many students will take 3 'A' Levels plus the EPQ. For some high achieving students, it is an option to do 4 'A' Levels plus the EPQ.

Assessment objective	Marks available	Weighting
AO1 Manage Identify, design, plan and carry out a project, applying a range of skills, strategies and methods to achieve objectives.	9	17%
AO2 Use resources Research, critically select, organise and use information, and select and use a range of resources. Analyse data, apply relevantly and demonstrate understanding of any links, connections and complexities of the topic.	12	22%
AO3 Develop and realise Select and use a range of skills, including, where appropriate, new technologies and problem solving, to take decisions critically and achieve planned outcomes.	24	44%
AO4 Review Evaluate all aspects of the extended project, including outcomes in relation to stated objectives and own learning and performance. Select and use a range of communication skills and media to present evidenced project outcomes and conclusions in an appropriate format.	9	17%
Total	54	100%

Film Studies 'A' Level

Why Study Film Studies?

Studying Film will deepen your understanding, appreciation and enjoyment of the major art form of the last 120 years. We have all been 'cineliterate' since early childhood but few realise what a complex act of decoding we take on when we watch a film. Studying Cinema as a medium, as art and as a social and economic institution, you will engage with a wide range of different kinds of films, developing skills of observation, critical analysis and personal reflection.

What Does The Course Involve?

You will be introduced to the diverse range of film forms and film styles that have developed in different places through the history of cinema. This will include analysing how film 'works'; how the interaction between spectator and the use of editing, sound and visual storytelling creates meaning. There will be opportunities to put this learning into practice through practical filmmaking.

We will also analyse how the context of filmmaking affects style and ideology through study of a diverse range of film, including documentary, Hollywood genre films, experimental film and British cinema. There will also be a focus on international film movements.

With its emphases on visual storytelling and response Film Studies extends areas of experience covered by Literature, Theatre and Art History specifications. With its emphases on depth and diversity it goes much further than Media Studies in providing a foundation in the study of film texts, producers, audiences, messages and critical approaches. With its emphases on the interaction between audiences and film and psychoanalytical approaches to reading Cinema, there are links with the Social Sciences and Business Studies. With its emphases on the context of film production, there are parallels with the study of History.

How Will I Be Assessed?

Exam board: WJEC. The 'A' Level course will involve two exams, one focusing on American and British film, the other on Varieties of Film. Exams will total 70% of the mark. 30% will come from a creative production of **either** a short film (4-5 minutes) **or** a screenplay (1600-1800 words), plus an evaluative analysis of the creative work.

Leading To A Career In?

Film-making, film theory, film criticism and film history

- The social sciences
- The media
- Journalism
- The performing arts
- Business
- Marketing
- Creative writing

What Are The Entry Requirements?

4 in English Language.

Financial Studies Level 3 Diploma

Why Study Financial Studies?

Moving into Sixth Form means taking your first steps into the 'real' world. You will likely get a part time job, open a bank account if you don't already have one and take out your first insurance policy in your own name. You may start to use a debit card and, if you go to university, you'll certainly get into debt!

How will you navigate your way through the financial minefield of bank accounts, credit cards, mortgages, loans, insurance policies etc? How will you ensure your financial sustainability over the short and long term?

On 6 September 2018, the BBC news reported that up to 8.3 million people in the UK were unable to pay off debts or household bills. The consequences of this can be devastating. The Level 3 Certificate and Diploma in Financial Studies (AS and A Level equivalent) will equip you with a financial understanding that many adults lack, ensuring you are prepared to tackle important financial decisions as you go through life.

What Does The Course Involve?

Through the use of the LIBF online study resources, you will develop independent study skills, enabling you to become an autonomous learner. You may study the Certificate in Financial Studies as a stand-alone, one-year qualification. You must pass the Certificate in order to progress to the Diploma. Practical activities involving group work and presentations will develop your team working skills. You will undertake independent research and be expected to keep up to date with current affairs and news stories. You will learn how to analyse financial products and make recommendations for a specific client, e.g. the best credit card for a young adult, or the best pet or home insurance policy for an older client. You will learn the terminology and jargon associated with financial products.

How Will I Be Assessed?

Exam board: London Institute of Banking and Finance (LIBF). 100% exam based.

Assessment	Modules	Entry Criteria
Certificate: 2 x 45 min, 35 mark m/c questions 2 x 1 ¾ hr exam pre-release case study	1. Financial Capability for the immediate and short term. 2. Financial Capability for the medium and long term.	5 x GCSE at Grade 4 or above, including Eng and Maths. Students do not need to have studied Business previously but, where they have, they should have achieved Grade 4.
Diploma: As above plus: 2 x 1 hour 35 mark m/c questions 2 x 2 hour exam pre-release case study	3. Sustainability of an individual's finances. 4. Sustainability of the financial services system.	

Leading To A Career In?

Financial Studies is widely recognised by universities and carries the same UCAS points as any A Level. The LIBF itself offers full time undergraduate banking and finance courses. Students who have studied the Diploma in Financial Studies are ideally equipped to progress to careers in the financial world, particularly in the field of financial adviser, mortgage broker, banking, etc.

What Are The Entry Requirements? 4 in English Language and 4 in Maths.

Why Study French?

Languages are all around us; they are used in so many situations whether at work, on holiday or just casually in day-to-day life - we live in a multilingual global society. The aim of the 'A' Level modern language course is to help you to develop an interest in speaking a foreign language, to gain awareness of the need to speak foreign languages, to appreciate the nature and diversity of different cultures and people and to acquire knowledge, skills and understanding for practical use, further study and employment. Choosing an 'A' Level language is a really smart move if you want a fascinating subject that offers you a range of career possibilities at the end and is a lot of fun along the way.



You already know how essential languages are for integrating in a culture and getting the most out of your experience; you'll get more of a taste of life in a different country. Languages can take you to some wonderful places and give you many brilliant opportunities. French could take you to Africa, Canada, Switzerland . . .

What Does The Course Involve?

'A' Level languages build upon your existing knowledge gained at GCSE, giving you a sound understanding of using your language in a variety of contexts and situations - at home, abroad, with friends or in the workplace. At 'A' Level French, you will study current trends and issues (for example new technologies) in French-speaking society, as well as political and artistic culture (including a film) in the French-speaking world. In Year 13 you will complete an individual research project. With around nine hours of class time a fortnight dedicated to learning your language, you will rapidly make noticeable improvements not only in your speaking and writing ability but also in your understanding and use of grammar and more advanced vocabulary. You will also have an individual weekly speaking session with a French native speaker.

How Will I Be Assessed?

This is a two year linear course, assessed by examination at the end of Year 13. Examinations are as follows:

	Skills assessed	Duration	Marks	% of course
Paper 1	Listening, reading, writing and translation into and out of French	2 hours 30 mins	100	50%
Paper 2	Writing	2 hours	80	20%
Paper 3	Speaking	23 mins max	60	30%

However, we will also offer a one year, ie AS option for students who wish to take the course as one of four subjects in Year 12. For information about this, please contact the MFL department.

Leading To A Career In?

Studying languages teaches you all the skills that employers look for: an analytical mind; good thought process; amazing memory capacity; fantastic cultural and intercultural awareness; good communication; great team player to name just a few. Languages are an invaluable skill to have and having a language can increase your salary by as much as 20% and gives you a head start on other potential employees. Speaking another language means you are vital to any company who does international business. You may need languages for all sorts of career destinations, not just the obvious ones of teaching, interpreting and translating: doctors, psychologists and physiotherapists need language skills to communicate effectively with patients whether they work in the UK or overseas; businessmen, bankers and entrepreneurs all need language skills to make deals and sell products on the global market; politicians, historians, geographers and holiday reps all need language skills to get to know the people and area that they are passionate about.

What Are The Entry Requirements? 6 in French.

Geography 'A' Level

Why Study Geography?

Geography matters. It matters because it's relevant. Geography's relevance stems from the fact that it can lie at the heart of government policy making, as well as affecting the way we live our everyday lives. It considers some of the most critical issues affecting the planet today, such as population growth and migration, hazard impact, globalisation and environmental degradation. To understand Geography is to understand your world.

Geography's strength lies in its breadth. It draws together just about all other subjects and explains the link between them all. It is the link between science and the arts and looks at key issues such as sustainability, interdependence and global citizenship. Universities and employers like Geography, as it provides you with so many useful and transferable skills; including analytical, statistical, presentational and research skills, useful in so many disciplines.

What Does The Course Involve?

'A' Level
Component one: Physical systems <ul style="list-style-type: none">• Glaciated landscapes• Earth's life support systems: water and carbon cycles
Component two: Human interactions <ul style="list-style-type: none">• Changing spaces, making places• Global connections: Global Migration and Power and Borders
Component three: Geographical debates <ul style="list-style-type: none">• Hazardous earth• Disease dilemmas
Component four: Investigative geography <ul style="list-style-type: none">• Independent investigation



An essential part of Geography is studying the environment first hand. The department organises a range of fieldwork opportunities to enable you to develop the necessary skills. These trips include a residential trip to North Wales at the start of the course to study glaciated landscapes and optional trips to support different aspects of the course, including; Iceland, New York and Malaysia.

How Will I Be Assessed?

Exam board: OCR

'A' Level
Component one: Physical systems <ul style="list-style-type: none">• 1 hour 45 minutes written exam; 24% of 'A' Level
Component two: Human interactions <ul style="list-style-type: none">• 1 hour 45 minutes written exam; 24% of 'A' Level
Component three: Geographical debates <ul style="list-style-type: none">• 2 hour 30 minutes written exam; 32% of 'A' Level
Component four: Investigative geography <ul style="list-style-type: none">• Internally assessed, externally moderated; 20% of 'A' Level



Leading To A Career In?

Geography is a subject that teaches transferable skills which help with many career paths and are highly valued in the job market. Geography is particularly useful for careers in: environmental management, international aid/development, logistics and distribution, market researcher, nature conservation officer, tourism officer, transport/town planner, cartographer, surveyor and geographical information systems officer.

What Are The Entry Requirements? 5 in Geography.

Why Study German?

Languages are all around us; they are used in so many situations whether at work, on holiday or just casually in day-to-day life - we live in a multilingual global society. Choosing an A-level language is a really smart move if you want a fascinating subject that offers you a range of career possibilities at the end and is a lot of fun along the way. You already know how essential languages are for integrating in a culture and getting the most out of your experience; you'll get more of a taste of life in a different country.



Languages can take you to some wonderful places and give you many brilliant opportunities. German could take you to Switzerland, Austria, Namibia . . . and is the employers' favoured MFL 'A' Level, giving you an edge for career opportunities in business.

What Does The Course Involve?

'A' Level languages build upon your existing knowledge gained at GCSE, giving you a sound understanding of using your language in a variety of contexts and situations - at home, abroad, with friends or in the workplace. At 'A' Level German, you will study current trends and issues (for example new technologies) in German-speaking society, as well as political and artistic culture (including a film) in the German-speaking world.

In Year 13 you will complete an individual research project. With around nine hours of class time a fortnight dedicated to learning your language, you will rapidly make noticeable improvements not only in your speaking and writing ability but also in your understanding and use of grammar and more advanced vocabulary.

How Will I Be Assessed?

This is a two year linear course, assessed by examination at the end of Year 13. Examinations are as follows:

	Skills assessed	Duration	Marks	% of course
Paper 1	Listening, reading, writing and translation into and out of French	2 hours 30 mins	100	50%
Paper 2	Writing	2 hours	80	20%
Paper 3	Speaking	23 mins max	60	30%

However, we will also offer a one year, ie AS option for students who wish to take the course as one of four subjects in Year 12. For information about this, please contact the MFL department.

Leading To A Career In?

Studying languages teaches you all the skills that employers look for: an analytical mind; good thought process; amazing memory capacity; fantastic cultural and intercultural awareness; good communication; great team player to name just a few. Languages are an invaluable skill to have and having a language can increase your salary by as much as 20% and gives you a head start on other potential employees. Speaking another language means you are vital to any company who does international business. You may need languages for all sorts of career destinations, not just the obvious ones of teaching, interpreting and translating: doctors, psychologists and physiotherapists need language skills to communicate effectively with patients whether they work in the UK or overseas; businessmen, bankers and entrepreneurs all need language skills to make deals and sell products on the global market; politicians, historians, geographers and holiday reps all need language skills to get to know the people and area that they are passionate about.

What Are The Entry Requirements? 6 in German.

History 'A' Level

History 'A' Level

Why Study History?

If you want to understand how the world we see today was shaped and forged, how one event and person can change the course of History, and debate the very nature of "fact" itself, History at Hinchingsbrooke is the course for you!

At Hinchingsbrooke, we aspire to train you as Historians. Knowledge lies at the heart of our enquiries, as does our engagement with primary evidence and interpretations.



The History Department also wishes you to explore the world of the individuals you study, with heritage opportunities such as trips to Russia and Hampton Court Palace.

What Does the Course Involve?

The breadth of experience and expertise within the History Department allows us to offer two courses to Sixth Form Students, Pathway A and Pathway B.

Both Pathways afford students the opportunity to enjoy a broad range of historical topics, chronologically, geographically, and thematically. Both Pathway options are examined in the exact same manner: the choice is purely personal on what areas of History most appeal to you! [N.B. Only one Pathway can be taken, A or B.]

Unit	Pathway A	Pathway B
Paper 1: Breadth Study 40%	The Tudors: 1485 – 1603 <i>Early Modern</i> <i>British</i>	The Making of a Superpower: USA, 1865 – 1975 <i>Modern</i> <i>International</i>
Paper 2: Depth Study 40%	Democracy and Nazism: 1918 – 1945 <i>Modern</i> <i>International</i>	The English Revolution: 1625 – 1660 <i>Early Modern</i> <i>British</i>
Coursework: 20%	The Making of Modern Russia: 1856 - 1964	

How Will I Be Assessed?

Exam Board: AQA Exam: 80% Coursework: 20%

Leading to A Career In?

'A' Level History can lead to many career paths including Teaching, Journalism, Law, Heritage, and the Civil Service.

What Are the Entry Requirements?

5 in History GCSE. 5 in English Language.

Why Study Maths?

There are three good reasons why you should consider studying 'A' Level Mathematics:

- It gives you a chance to understand what Mathematics is really about. It is most definitely not about getting 'the answer!' – and in many ways has less to do with numbers than you might think. Instead it is about applying your knowledge to solve problems. Put more simply it is about learning to think.
- Mathematics is the most cited facilitating course for entry to degree level courses and has consequently become the most popular 'A' Level subject over the past two years.
- Mathematics is the only 'A' Level subject where there is a proven link to improved income chances in later life. Students who pass 'A' Level Maths earn on average 10% more in later life than those that do not.

What Does The Course Involve?

Employers value skills such as problem solving, logical thinking and an ability to articulate clear written arguments. 'A' Level Mathematics is focused very much on developing these skills and written work based around algebraic communication will feature in almost every lesson.

You will need to be able to think clearly, remember methods you have met and understood and be able to apply them to new situations. You will learn the meaning of mathematical terms and the real mathematical meanings of some things you thought you already knew. You will be expected to be able to talk about your work, with your friends and with your teacher and to be able to apply mathematics to practical situations, sometimes called modelling.

You will need to understand about numbers, arithmetic, estimation, and patterns, be able to use a calculator sensibly and work things out in your head when necessary. A particular focus of the new 'A' Level is on understanding large data sets and using technology to solve problems. All students will need a Casio Classwiz or an approved graphical calculator for use during the course.

All students studying Mathematics will spend 66% of the course studying Pure Maths (trigonometry, algebra, calculus and proof), 17% studying Mechanics (modelling forces, motion and the physical world) and 17% studying Statistics (statistical sampling, data presentation and probability).

Students who excel at Maths can opt to study Further Maths alongside their 'A' Level in Maths to get a second 'A' Level in Further Maths. Most students opting for Further Maths do so as a fourth subject.

All students take a baseline test on the enrolment day in September that's heavily based on Transition Work. We use the information gathered to identify weaknesses for a targeted start to a successful course.

How Will I Be Assessed?

Exam Board: OCR – Assessment is all via exam papers

Leading To A Career In?

Mathematics is key to most scientific disciplines so it could lead onto higher education courses in science related subjects as well as Mathematics, Engineering, Computer Science and Economics. With further training, you could go into a job related to Mathematics such as an Accountant, Engineer, Financial Adviser, Business Manager, Software Engineer or Teacher. You could also go straight into a job as the 'A' Level is a recognised qualification that will help you develop the skills, understanding and knowledge that many employers across lots of industries are looking for.

What Are The Entry Requirements?

The minimum requirement to study Mathematics is a 7 in GCSE Maths.

Only one Maths course out of Maths (one 'A' Level) and Further Maths (two 'A' Levels) can be taken.

Further Mathematics 'A' Level

Why Study Further Maths?

Further Maths is a unique 'A' Level that offers students who have traditionally excelled in Mathematics the chance to look even deeper at key mathematical principles and to earn two distinct 'A' Level qualifications: one in 'A' Level Maths and one in 'A' Level Further Maths. There are several reasons why students should consider studying Further Maths:

- If you enjoy Maths then what is not to like about doing more of it! The Further Maths course offers the greatest insight into what real mathematics is about and develops the subject to provide a fuller understanding of both its applied and abstract nature. The extra maths practice/lessons also really help to consolidate success in the single 'A' Level Maths qualification.
- Students wanting to study Maths or Engineering at a top university will generally have been expected to have studied Further Maths at 'A' Level. Students applying for these courses who have not studied Further Maths are at a disadvantage.
- The content in Further Maths often overlaps with first year degree courses in several related disciplines such as Chemistry, Physics and Economics. Students who have already covered this content in the sixth form have an advantage over those that have not.
- Despite its unique place in post 16 education, Further Maths is still in the top 15 of the most popular 'A' Level subjects taken by students.

What Does The Course Involve?

Students studying 'A' Level Further Maths are taught a bespoke course in a separate class that covers all of the content for 'A' Level Maths alongside the extra content for Further Maths. Students studying Further Maths need to have excellent algebraic skills and a love for the abstract nature of the subject. As in 'A' Level Mathematics, you will be expected to do a lot of written work, presented so that others can understand clearly what you are trying to do. You will need to be able to think clearly, remember methods you have met and understood and be able to apply them to new situations. You will be expected to be able to talk about your work, with your friends and with your teacher and to be able to apply mathematics to practical situations, sometimes called modelling.

All students studying Further Maths will cover the 'A' Level Maths Course, plus a second 'A' Level of which 50% is pure maths (complex numbers, further calculus, hyperbolic functions, matrices and differential equations) and the other 50% is split equally between mechanics and statistics, building on the topics covered in the single 'A' Level. Students are recommended to have an approved graphical calculator.

All students take a baseline test on the enrolment day in September that's heavily based on Transition Work. We use the information gathered to identify weaknesses for a targeted start to a successful course.

How Will I Be Assessed?

Exam Board: OCR – Assessment is all via exam papers at the end of Year 13.

Leading To A Career In?

Mathematics is key to most scientific disciplines so it could lead onto higher education courses in science related subjects as well as Mathematics, Engineering, Computer Science and Economics. With further training, you could go into a job related to Mathematics such as an Accountant, Engineer, Financial Adviser, Business Manager, Software Engineer or Teacher. You could also go straight into a job as the 'A' Level is a recognised qualification that will help you develop the skills, understanding and knowledge that many employers across lots of industries are looking for.

What Are The Entry Requirements?

You cannot study Further Maths without studying for 'A' Level Maths. The entry requirement is 8 in GCSE Mathematics.

Why Study this course?

Maths is for everyone. It is diverse, engaging and essential in equipping students with the right skills to reach their future destination, whatever that may be.

Level 3 Mathematical Studies is a new qualification designed for students who have achieved a grade 4 or above at GCSE. It is a one year course and can only be taken as a fourth subject in Year 12 alongside three other subjects.

The course helps to develop students' mathematical skills and thinking and supports courses such as A-level Psychology, Sciences and Geography as well as technical and vocational qualifications.

What Does The Course Involve?

Mathematical Studies aims to build on the knowledge, understanding and skills established in GCSE Mathematics. As such, students choosing this subject will need to have a solid grasp of basic numeracy and algebra. Unlike a lot of the content at GCSE, Mathematical Studies covers topics that have 'real world' applications and will be useful after the student has finished their studies.

There is heavy emphasis on critical thinking and problem solving with students being encouraged to 'think outside the box'. Not all questions have a single solution, and a large part of the marking relies on a student being able to justify their reasoning to achieve full marks.

How Will I Be Assessed?

Students will be assessed throughout the one year course (through end of topic assessments as well as assessed homework). The final grade is determined by two end of year live examinations (AQA specification code 1350) detailed below. Calculators are allowed for both papers.

Paper 1: 1 hour and 30 minutes (60 marks)

Paper 2: 1 hour 30 minutes (60 marks) [either statistical or graphical techniques or critical path analysis]

Leading To A Career In?

Mathematical Studies is a recognised qualification that will help you develop the skills, understanding and knowledge that many employers across lots of industries are looking for.

What Are The Entry Requirements?

Students will need to achieve at least a level 4 in Mathematics at GCSE. They will be set work to complete over the summer holiday to help prepare them for the course (there will be a small check in at the start of the course based on this). In addition, students will need to prepare a presentation to deliver in September.

Media Studies 'A' Level

Why Study Media?

The media plays a central role in contemporary culture, society and politics, shaping our perceptions of the world through the representations, ideas and points of view they offer. This course aims to explore how Media texts create meaning, and how their representations of the world affect audiences. You will also look at the economic and cultural context in which individual media texts operate, through the close analysis of a range of media texts – both 'traditional' media (newspapers, television, films,) and digital online media (blogs, websites). You will also develop practical production skills and will be required to produce your own media products.

Any student with an interest in the Media and/or thoughts of following a Higher Education course in Media / Film / Communications / Journalism / Cultural Studies would benefit from taking this course.

The course works well with many subjects but especially English Language, English Literature, DT (Graphics), Photography, Film Studies and Sociology.



What Does The Course Involve?

This contemporary, accessible and creative course has been designed to allow learners to study the media in an academic context and apply the knowledge and understanding gained to the process of creating their own media production.

Macs, video and still cameras, and other necessary equipment are all also freely available to students for all creative projects that you undertake during the

Media Studies is designed to widen the intellectual horizons of the learner through the analysis of a wide range of media forms and contexts. It will enable students to develop a wider understanding and appreciation of the media in both an historical and contemporary context. Over the two year 'A' Level, students will demonstrate knowledge and understanding across a range of different media forms and will develop a critical understanding of the media and of media products. Students will respond to a short, unseen moving image extract in exam conditions and will apply their knowledge and understanding of the media to the creation of their own media product

How Will I Be Assessed?

Exam board: tba. 70% exam, 30% coursework.

Leading To A Career In?

The course is relevant to students considering a career in Media. It can lead directly to training, or to a place on a Media degree course. You will develop a range of skills on the course, which could lead to a number of different options in employment or Higher Education. Media Studies can lead to industry-related roles in areas such as production, journalism and photography.

What Are The Entry Requirements?

5 in English Language.

Music 'A' Level

Why Study Music?

This course is designed to help you develop your skills as a performer, composer and listener. You study the theory and history of music, will have instrumental or vocal lessons, and perform as both a soloist and as part of ensembles. You will also enjoy seeing a range of live music.

What Does The Course Involve?

Two original Compositions

- Listening and Understanding – which involves knowledge and analysis of set works
- Performing Minimum Grade 6 level
- Develop compositional techniques
- Develop listening and analysing

You will receive 9 hours lesson time during fortnight, additional listening, homework knowledge and analysis of set works, homework on compositional techniques composition, developing performing skills practice lessons, concerts, research.



the
on
and
–

How Will I Be Assessed?

Exam Board: Edexcel

Performing: You will need to prepare a recital of at least 8 minutes in length, assessed in school and moderated externally.

Composing: You will be assessed externally.

There is a two-hour listening and written paper at the end of Year 13.

Leading To A Career In?

'A' Level Music is widely accepted as a general qualification for entry into any type of business or organisation or for entry into a wide range of degree courses in other subjects. You could take this course with other advanced level courses to prepare for higher education in Music related courses or more general higher education courses.

With further training, you could go into a job related to Music such as a Music Composer, Musician, Sound Technician or you may wish to use your music ability for recreational purposes. The course is designed to provide you with access to a range of music related employment and will also develop the skills, understanding and knowledge that many employers seek.

What Are The Entry Requirements?

5 in Music. Grade 5 Theory and Grade 5 at an instrument recommended.

Music Technology 'A' Level

Why Study Music Technology?

You will develop vital skills for any career in the field, such as those to do with ICT, practical, aural, creative, research, knowledge and understanding.

You could take this course with other advanced level courses to prepare for higher education in Music related courses or more general higher education courses. With further training, you could go into a job related to Music such as a Music Composer, Musician, Sound Technician or you may wish to use your music ability for recreational purposes. The course is designed to provide you with access to a range of music related employment and will also develop the skills, understanding and knowledge that many employers across lots of other industries are looking for.

What Does The Course Involve?

- Sequencing and recording
- Composing
- Listening, based on popular music and jazz
- Producing and analysing/ demonstrating ability to control and interpret midi data including a study of film music

You will have 9 hours lesson time per fortnight, two hours a week in addition on coursework, additional listening, research into development of Music Technology, Classical Music and Popular Music and Jazz.



How Will I Be Assessed?

Exam Board: Edexcel

By a portfolio of work submitted during the second year of study. This will comprise of a Multitrack recording and a Composition. There are also two written exams; the 'Listening and Analysing' exam followed by the 'Producing and Analysing'. Both of these will test different aspects of recording and production techniques and principles, in the context of a series of unfamiliar commercial recordings supplied by Pearson.

Leading To A Career In?

Sound recording, leisure industry, composer, music industry, DJ. Careers include: arts, administration, instrument making/repair/restoration, military band, journalism, librarian, music therapy, teacher, lecturer, performer, public relations, tour manager.

What Are The Entry Requirements?

Grade 4 in GCSE Music or equivalent. Understanding of music theory to at least grade 3 and ability on an instrument are strongly desirable. Ability to play the piano/keyboard and experience of using music technology programmes such as GarageBand or Cubase would be advantageous.

PE 'A' Level

Why Study PE?

Sport and fitness is a huge industry... and you can be part of it. If you're keen on sport you can make a healthy living from your passion. Whether that's working for a football club, as a personal trainer at the local gym, or training to be a physiotherapist, there are lots of opportunities. From professional sport through to amateur teams and individuals who just want to get in shape, sport and fitness is a fast-growing business.

Best of all, you could be in a career doing something that you love.

What Does The Course Involve?

In the first year there are two main study topics.

The first of these covers the beneficial effects of a healthy lifestyle and includes subjects like the physiological effects of exercise and how people acquire sports skills. In the second study topic you'll learn how to analyse and evaluate an athlete's performance, how to improve performance, and the factors affecting gaining new skills.

In the second year you'll have two main study topics again. The first continues with the theme of optimising the performance of an athlete. This includes how physiology can improve performance for elite athletes, as well as studying the important topics within sport today. The second study topic looks at performance in competitive situations. This includes the observation and analysis of weaknesses, along with ways of correcting any errors the athlete is making

How Will I Be Assessed?

Exam Board AQA. This qualification is linear, meaning that students will sit all their exams and submit all their non-exam assessment at the end of the course. It is 70% theory and 30% practically assessed.

Leading To A Career In?

The subjects you learn about will be invaluable at a personal level and will help you to be better at sport, no matter what your standard.

This 'A' Level also opens up a whole number of career options.

- Sport Scientist
- Physiotherapist
- Working for a national governing body
- Psychologist
- Technology in Sport
- Sport and the Law
- PE Teacher
- Nutritionist
- Sports Journalism

What Are The Entry Requirements?

4 in Science and 4 in PE are preferable but not required.



Photography 'A' Level

Why Study Photography?

The course is designed to encourage creativity, imagination and independence based on personal experience, taught skills and critical understanding, transferable to other areas.

To study as a subject that may be either a positive contrast or complement to your other chosen subjects – Fine Art, Contemporary Fine Art, Film Studies, Media Studies, The Social Sciences, Music, Performing Arts, Dance, Criminology.

What Does The Course Involve?

This is a broad course of study.

The study of traditional photographic techniques including, researching light exposure, film speed, aperture variation, focus. Dark Room techniques. Photograms, Cyanotypes, Photo-montage. Moving image/time based Photography. Digital Photography including image manipulation, through various software packages including Photoshop.

Drawing to develop ideas and outcomes, Use of a range of techniques to combine traditional photography, digital photography, drawings and collage/ montage to realise outcomes. A wide range of photographers, artists, film makers and art movements will be studied, including Contemporary works.

There are trips out to relevant galleries and exhibitions in London throughout the course, such as the Photographers Gallery, the Courthauld Institute, The Tate Modern. There is a foreign trip in May of Year 12 and residential UK trip at the beginning of Year 13. University and Degree Show trips are also organised; including to our partner the University of Creative Arts. Lectures by department staff and guest visitors are organised throughout the course, and portfolio sessions and workshops are run in Year 13. Creative work experience placements are facilitated.

How Will I Be Assessed?

Exam board: AQA.

Component 1 – Personal Investigation (60% of the final grade):

- (i) a portfolio of practical work in response to a brief or stimulus, devised and provided by the centre
- (ii) a related study: an extended response of between 1000 and 3000 words.

Component 2 – Externally Set Task (40% of the final grade) 12 week prep period and 15 hour exam

Leading To A Career/ Further Courses In?

Photography – Commercial, Fashion, Documentary, Advertising, TV work, Reporting, Film Studies, Media Studies, Digital Art, Communication, Photography Historian, Animation, Museum and Curating work.

What Are The Entry Requirements?

4 in Art. Photography can be taken alongside both Fine Art or Contemporary Fine Art.



Physics 'A' Level

Why Study Physics?

Are you interested in the physics topics in your science studies at GCSE? Are you good at Maths? Do you enjoy problem solving? Would you like to know more about fundamental ideas such as quantum mechanics, cosmology and nuclear physics? If the answer to these questions is yes, then 'A' Level Physics might be for you.

What Does The Course Involve?

Module 1 – Development of practical skills in Physics: skills of planning, implementing, analysis and evaluation

Module 2 – Foundations of Physics: physical quantities and units; scalars and vectors; measurements

Module 3 – Forces and motion: motion; forces in action; work, energy and power; materials; Newton's laws of motion and momentum

Module 4 – Electrons, waves and photons: charge and current; energy, power and resistance; electrical circuits; waves; quantum physics

Module 5 – Newtonian world and astrophysics: thermal Physics; circular motion; oscillations; gravitational fields; astrophysics

Module 6 – Particles and medical Physics: capacitors; electric fields; electromagnetism; nuclear and particle physics; medical imaging.

How Will I Be Assessed?

Exam Board OCR. There are three papers plus a practical endorsement.



Leading To A Career In?

A Physics qualification is essential for many future careers in science and engineering. It is also classed as a "facilitating" 'A' Level by Russell Group Universities as there are many university courses that require 'A' Level Physics. Physics can also help you make progress in other fields that value the demanding skills developed through Physics. Many architects, accountants, bankers and lawyers have benefited from studying Physics at 'A' Level. Physics is even relevant if you are planning to study music, as it helps you to understand how sound is produced and transmitted.

What Are The Entry Requirements?

For Triple Science students, 7 in Physic and 6 in Maths. For Combined Science students, grade 7-7 in Science and 6 in Maths.

Why Study Politics?

This course will give you valuable insights into the world of political ideas, processes and key institutions. There can be no better time to study Politics due to the rapidity of change in the world. The loss of confidence in governments in the West and the rise of populist political movements, the breakdown of governments in the Middle East, and Brexit, are all events which point to a crisis in domestic and international politics, and have and will continue to touch our lives. A successful student of Politics will leave the course with a developing knowledge of both domestic and international Issues, and will have the skills necessary to make effective contributions to future political debates.

What Does The Course Involve?

There are three broad areas of study:

- The government and politics of the UK
- The government and politics of the USA
- Political ideas

The course asks you to identify parallels, connections, similarities and differences between aspects of politics. This will ensure that you develop a critical awareness of the changing nature of politics and the relationships between political ideas, political institutions and political processes.

The political ideas to be studied have relevance to both of the systems of government and politics in both the UK and the USA. There are set authors whose texts will provide a variety of theoretical perspectives which will further enhance your knowledge and understanding of politics as a whole. The study of political ideas is an integral part of the course, teaching you to analyse, interpret and evaluate political information to form rounded arguments and make mature judgements about all aspects of political life.

You will be expected to keep up to date by watching current events on TV and reading quality newspapers. You are encouraged to incorporate internet research into working habits. Course content is delivered via a range of teaching and learning activities which include, lectures, small group presentations, discussions and debates. Past questions are set for homework every two to three weeks for each teacher.

How Will I Be Assessed?

Exam Board AQA. There are three exams at the end of two years. 100% examination.

Leading To A Career In?

This is an excellent 'A' Level for many career pathways and university degrees, in fields such as politics, international relations, law, history, sociology, economics, business...all these will benefit from this course.

What Are The Entry Requirements?

5 in English Language.

Why Study Psychology?

- Do you regularly find yourself questioning the behaviour of others?
- Are you interested in understanding how we can investigate human behaviour from a scientific point of view?
- Does your future career involve working with other humans?

If you've answered 'yes' to any of these, then Psychology may be for you! But, if you're more interested in solving murders, mind reading and learning about counselling, then it's unlikely you'll fulfil those needs in this course.

What Does The Course Involve?

Over two years, you will explore 11 topics with two specialist teachers. By the end of the course, you'll have a foundation of knowledge in various areas of psychology such as Social Psychology, Cognitive Psychology, Developmental Psychology, Psychopathology, Biopsychology and Research Methods which will prepare you for focused exploration at University.

Topics that you will explore in Year 12 include:

Approaches – Explore the various perspectives of Psychology that aim to explain behaviour and understand how Psychology developed into a Science.

Memory – Understand the elements that form your memory and begin to understand why humans forget, how we learn and how our memory is flawed.

Social Influence – Investigate why the majority of people conform and obey instructions but also understand why some don't.

Psychopathology – Understand the aetiology, diagnosis and prognosis of Depression, OCD and Phobias.

Attachment – Explore the purpose of attachment and why it's an essential part of development, including the consequences of a disrupted relationship.

Biopsychology – Explore behaviour from a biological perspective, identifying neural structure, neurochemistry and the biological rhythms that control the body.

Psychology is one of the most popular subjects at Hinchingsbrooke Sixth Form and the 2nd most popular subject nationally (Gov, 2020)



How Will I Be Assessed?

Three, 2-hour exams usually in May/June of Year 13.

You'll be assessed on your ability to explain your knowledge and understanding of theories and research, apply your knowledge to scenarios and your ability to effectively evaluate theories and research.

- **Paper 1:** Introductory Topics in Psychology: Social Influence, Memory, Attachment, Psychopathology.
- **Paper 2:** Psychology in Context: Approaches in Psychology, Biopsychology, Research Methods.
- **Paper 3:** Issues and Options in Psychology: Issues and Debates, Gender, Schizophrenia and Aggression.

Leading To A Career In?

An understanding of human behaviour will help you in **any** career where there are humans.

Most students continue to study Psychology at degree level, with many choosing a career in Clinical Psychology, Law or Legal professions, Teaching, Researching their own investigations, Business and Marketing, Medicine, Forensic Psychology, Neurology, Sports Psychology or Counselling and therapy routes.

What Are The Entry Requirements?

5 in **at least** one science (preferably Biology) and 5 in Maths **and** English Language.

Religion, Philosophy and Ethics 'A' Level

Why Study RPE?

'A' Level RPE provides students with a broad introduction to the study of religious, philosophical and ethical concepts.

This course is designed to:

- develop a range of transferable skills which can be applied far beyond the study of RPE
- enable students to develop the ability to reason, form their own judgements, express themselves coherently and contribute to the process of debate
- develop an understanding and appreciation of religious thought and its contribution to individuals, communities and societies.

"There are some advanced level subjects which provide suitable preparation for entry to university generally...Examples of such subjects include...Religious Studies." The Russell Group *Informed Choices* 2015/2016

What Does The Course Involve?

You will study three main areas of the course:

- **Philosophy** – Can we prove God exists? Is religion a product of the mind? Does the modern world need religion? Is there a problem with the language we use when talking about philosophical issues?
- **Ethics** – What do we mean when we say 'good' and 'bad'? Are we completely free to act as we choose? Should we agree with: abortion, euthanasia, capital punishment and nuclear weapons?
- **Christianity** – How reliable are religious texts? Is God male or female? Can we still believe in religion with the challenges from science? Does celebrating Easter and Christmas make us religious?



How Will I Be Assessed?

Exam board Eduqas. RPE is assessed by three two-hour examination papers (one on each of the above areas) at the end of the 'A' Level.

Leading To A Career In?

Many of our students go onto university to study Philosophy and/or Religious Studies, often in combination with other disciplines. Popular combinations include: Philosophy/History; Philosophy/English; Philosophy/Law; Philosophy/Maths and even Philosophy/Biology.

RPE is a valued qualification in such careers as: politics, research, journalism, law, charities, social services, education, civil service, publishing, marketing, and advertising.

What Are The Entry Requirements?

5s in English Language, and, preferably, Religious Studies.

Why Study The Applied Science BTEC Level 3?

This course is ideal for those looking for a medical career. As well as getting a qualification in medical science, you will also be experience how science operates in the workplace. It will provide you with the knowledge, understanding, technical and employability skills to help you find employment in the applied science sector or to give you entry to a wide range of university courses. Practical work will cover a variety of scientific and medical science techniques

What Does The Course Involve?

You will learn about: the fundamentals of science and working in the industry; scientific investigations; practical techniques; perceptions of science; and using mathematical tools in science. You may also study: biochemistry and biochemical techniques; microbiological techniques; human physiology; human regulation and reproduction; clinical psychology; diseases and infections; genetics and genetic engineering; and medical physics techniques.



How Will I Be Assessed?

Exam Board: Edexcel. You will do a mix of practical coursework and assignments, and put together a portfolio of your work.

Leading To A Career In?

This can lead to a science-related job or a degree course in biomedical sciences, microbiology, pharmacy work, medical sales, occupational therapy, physiotherapy, dietetics, dental studies, optometry, paramedics, radiology, research, clinical biochemistry and audiology.

What Are The Entry Requirements?

4 in English Language and Maths, 5s in Double Science, or a Level 2 Diploma in Science at Merit.

Why Study Sociology?

Sociology is the study of people in social groups. It attempts to describe and explain human behaviour in a variety of situations. It is a common mistake to think of Sociology as a soft option. While most people find it interesting, stimulating and enjoyable, it also involves reasoned and disciplined thinking and the use of abstract and difficult concepts.

Sociology is a living subject dealing with problems that face modern society and challenges many of the common sense notions that people may have concerning issues such as gender, ethnicity, sexuality and class. There is also a growing focus on the impact of globalisation at international, national and local levels so an interest in current affairs is beneficial when studying Sociology.

What Does The Course Involve?

Students should develop the ability to understand and use sociological concepts concerning theories and methods as well as those concerned with understanding contemporary social life in general. They should be able to interpret and evaluate sociological material in a variety of forms – written, graphical etc.

They should also learn to present explanations, ideas and arguments in a coherent and logical form as it is a subject that will develop the individual's ability to argue, think and present a balanced critical argument. As an academic subject is an ideal preparation for university entrance as well as careers such as teaching, human resource management, business, nursing or any occupation that is people orientated.

The course involves the study of three areas that contain various topics related to Sociology:

Paper 1: Education with Theory and Methods.

Paper 2: *Topics in Sociology*: Work, poverty and welfare, then Beliefs in Society.

Paper 3: Crime and Deviance with Theory and Methods.

How Will I Be Assessed?

Exam Board AQA. 100% examination after two years.

Leading To A Career In?

Sociology can lead to a range of further studies and possible careers including law, police work, journalism, teaching, medical professions, human resources, social work, management, the civil service and probation work.

What Are The Entry Requirements?

5 in English Language.



Spanish 'A' Level

Why Study Spanish?

Languages are all around us; they are used in so many situations whether at work, on holiday or just casually in day-to-day life - we live in a multilingual global society.

Choosing an 'A' Level language is a really smart move if you want a fascinating subject that offers you a range of career possibilities at the end and is a lot of fun along the way. You already know how essential languages are for integrating in a culture and getting the most out of your experience; you'll get more of a taste of life in a different country. Languages can take you to some wonderful places and give you many brilliant opportunities. Spanish is the third most widely-spoken language in the world and will open up not just Spain but also the whole of South America . . .



What Does The Course Involve?

'A' Level languages build upon your existing knowledge gained at GCSE, giving you a sound understanding of using your language in a variety of contexts and situations - at home, abroad, with friends or in the workplace.

At 'A' Level Spanish, you will study current trends and issues (for example new technologies) in Spanish-speaking society, as well as political and artistic culture (including a film) in the Spanish-speaking world. In Year 13 you will complete an individual research project.

With around nine hours of class time a fortnight dedicated to learning your language, you will rapidly make noticeable improvements not only in your speaking and writing ability but also in your understanding and use of grammar and more advanced vocabulary. You will also have an individual weekly speaking session with a Spanish native speaker.

How Will I Be Assessed?

This is a two year linear course, assessed by examination at the end of Year 13. Examinations are as follows:

	Skills assessed	Duration	Marks	% of course
Paper 1	Listening, reading, writing and translation into and out of French	2 hours 30 mins	100	50%
Paper 2	Writing	2 hours	80	20%
Paper 3	Speaking	23 mins max	60	30%

However, we will also offer a one year, ie AS option for students who wish to take the course as one of four subjects in Year 12. For information about this, please contact the MFL department.

Leading To A Career In?

Studying languages teaches you all the skills that employers look for: an analytical mind; good thought process; amazing memory capacity; fantastic cultural and intercultural awareness; good communication; great team player to name just a few. Languages are an invaluable skill to have and having a language can increase your salary by as much as 20% and gives you a head start on other potential employees. Speaking another language means you are vital to any company who does international business. You may need languages for all sorts of career destinations, not just the obvious ones of teaching, interpreting and translating: doctors, psychologists and physiotherapists need language skills to communicate effectively with patients whether they work in the UK or overseas; businessmen, bankers and entrepreneurs all need language skills to make deals and sell products on the global market; politicians, historians, geographers and holiday reps all need language skills to get to know the people and area that they are passionate about.

What Are The Entry Requirements?

6 in Spanish.

Why Study Sport?

Sport currently sits in the top 15 industrial sectors in England, contributing £20.3 billion to the economy in 2014, 1.9% of the total. The number of sport related jobs in the UK is estimated at over 400,000.

The sector also has a large number of volunteers, with the estimated economic value of sport-related volunteering at c£2.7 billion. Additionally participation in sport brings health benefits to the nation, which is currently estimated at c£11.2 billion. The BTEC is recognised by schools, colleges, universities and employers; a practical, real-world approach to learning; offers progress to further education, training and employment.

What Does The Course Involve?

The BTEC in Sport teaches the knowledge and skills you need to work in the industry.

- Learn about about the components of fitness and the principles of training and explore different training methods;
- Develop team working skills by organizing and leading sports activities and events and carrying out a variety of roles in a team;
- Present your work in a variety of ways, online research & using applications for presenting projects;
- Develop business and customer awareness;
- Investigate opportunities for employment in the industry, as well as exploring trends which effect participation in sport.

How Will I Be Assessed?

Exam Board: Edexcel. Assessment happens throughout the course, in the form of assignments. There are three core assignments and then there is flexibility to select what other three assignments you follow.

Mandatory Core Units

- Principles of Anatomy and Physiology in Sport
- The Physiology of Fitness
- Assessing Risk in Sport

Optional Units

- Fitness Training and Programming
- Sports Coaching
- Sports Development
- Fitness Testing for Sport and Exercise
- Practical Team Sports
- Practical Individual Sports
- Outdoor and Adventurous Activities
- Sports Nutrition
- Leadership in Sport
- Exercise, Health and Lifestyle
- Work Experience in the Sport, leisure and recreation sector.

Leading To A Career In?

Gym instructor, personal trainer, coach, sports massage therapist, sports management, teaching, physiotherapy, sports psychology, sports journalism.

What Are The Entry Requirements?

4 in English Language.